

No gluing, no laborious brick-laying.

Exposed brickwork – in a ventilated curtain facade:  
Quick and easy installation that is not dependent on the weather.

# Brick to Click<sup>®</sup>

Fully recyclable and sustainably resource-efficient.

No gluing, no laborious brick-laying.

Exposed brickwork – in a ventilated curtain facade:  
Quick and easy installation that is not dependent on the weather.

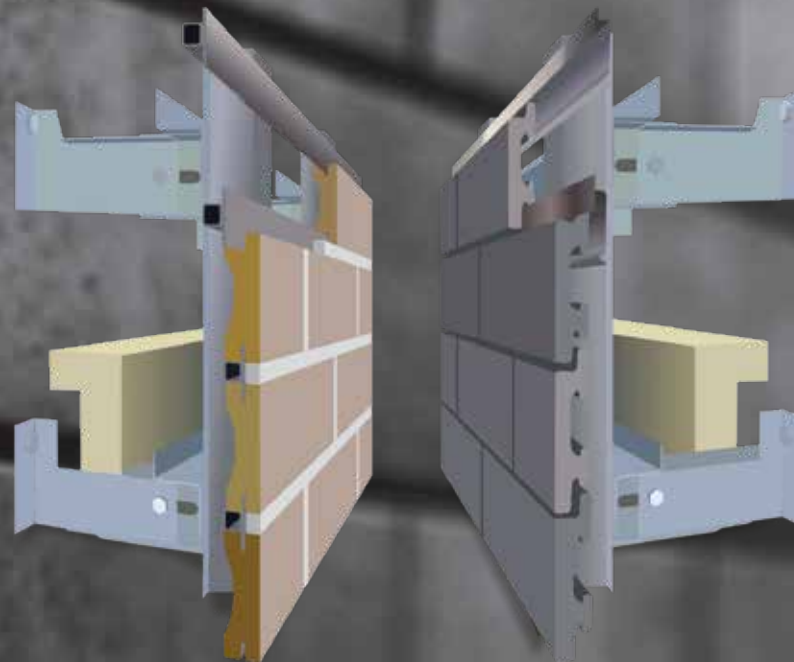
# Brick to Click<sup>®</sup>

In the past, for structural reasons, the classic exposed brickwork look has traditionally been created by laying bricks onto a stable foundation or gluing them onto an ETICS system, but innovative clinker facades with curtain and ventilated curtain systems are now becoming increasingly popular.

**Ströher Brick to Click. Clinker engineering, made in Germany.**

Ströher offers genuine clinker made in Germany for various curtain facade solutions. As natural products made of clay, Brick to Click clinker brick slips are plastically formed in a resource-efficient way from columns of moist clay and fired using the latest production technology. As a result, our sintered ceramic is almost water-resistant and is not only colour-fast and pressure-resistant, but is also guaranteed to be frost-resistant and dirt-repellent. This is how pieces of clay become effective and enduringly aesthetic clinker brick slips. Clinker engineering, made in Germany since 1884.



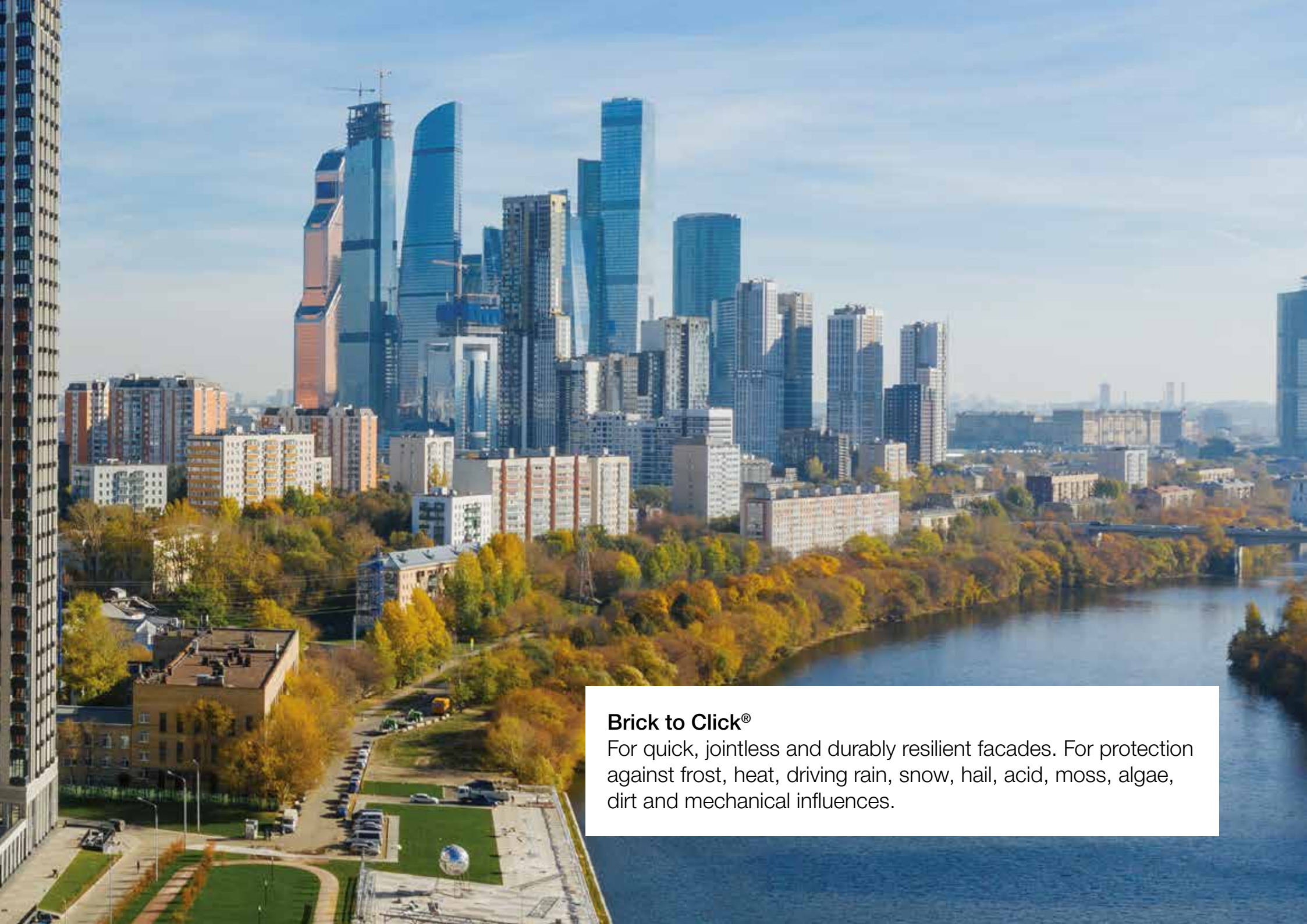


Ventilated curtain facades (VCF) are technologically high-quality, economically sustainable facade systems. The separation of the load-bearing and space enclosure functions from the weather protection and thermal insulation functions via an intermediate ventilation zone creates a highly effective structural design which guarantees the removal of moisture caused by water vapour diffusion or driving rain.





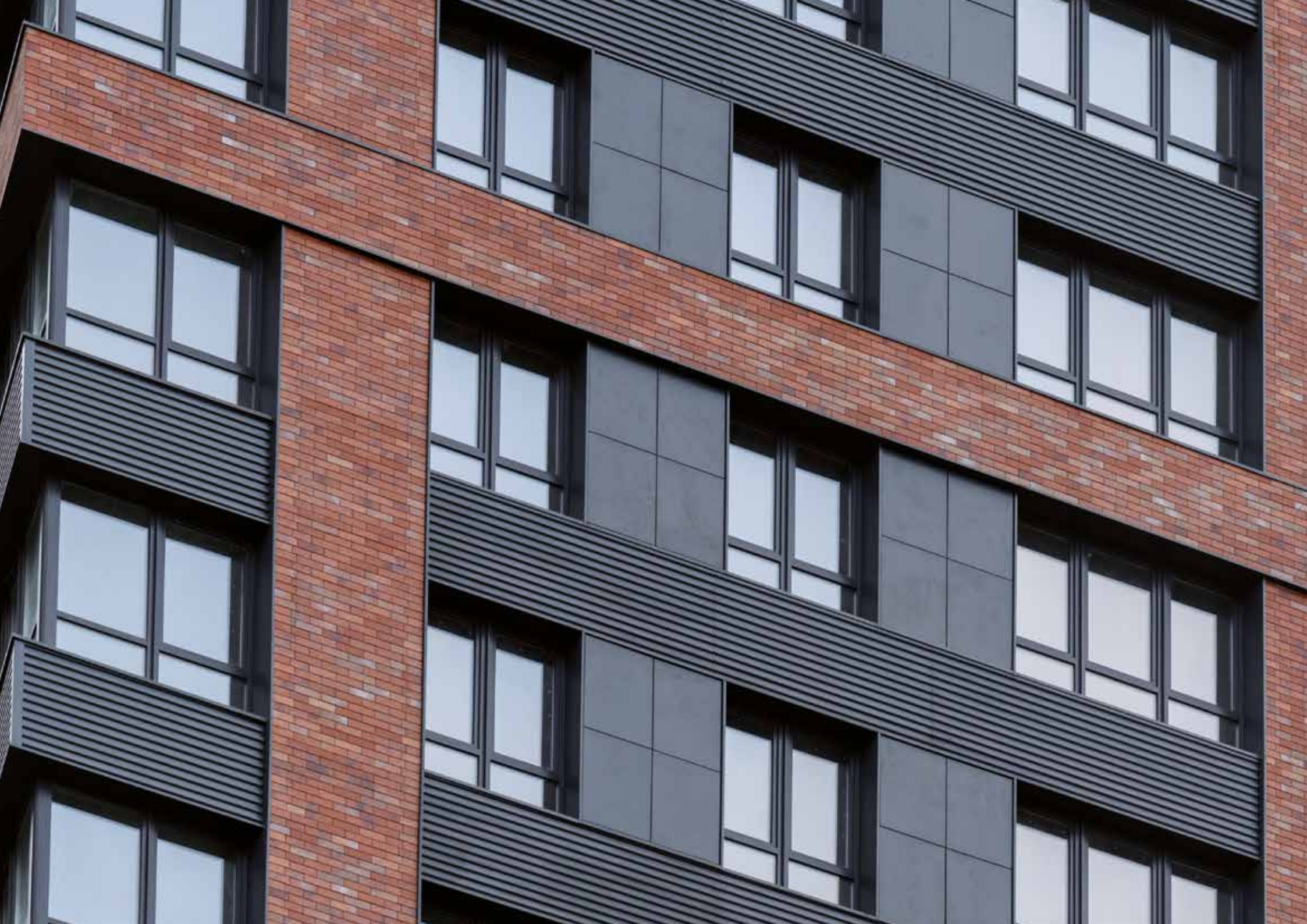





### **Brick to Click®**

For quick, jointless and durably resilient facades. For protection against frost, heat, driving rain, snow, hail, acid, moss, algae, dirt and mechanical influences.









**Brick to Click combines the outstanding properties of clinker with the typical advantages of a ventilated curtain facade in a facade cladding.**

### **The advantages at a glance:**



#### **SIMPLE, EFFICIENT AND ECONOMICAL**

- Simple to assemble by hooking in the clinker brick slips.
- No mortar, no water and thus no efflorescence.
- Assembly and implementation not seasonal nor dependent on weather conditions.
- Simple balancing of tolerances when renovating existing buildings.
- Extremely low maintenance and repair costs.
- Energy cost savings due to integrated thermal insulation.



#### **VCF MULTI-PROTECTION**

- **Efficient thermal protection** resulting from variations in insulation thickness.
- **Rain protection** resulting from interruption of the capillary migration of moisture.
- **Moisture and condensation protection** resulting from the guiding of moisture from the structure and living spaces to the ventilation gap.
- **Safe fire prevention** system components fulfil fire safety requirements in conformity with building regulations.
- **Lightning protection** – the use of a metal substructure replaces the need for lightning protection.
- **Good sound insulation** resulting from the combination of insulation and a high density facade.



#### **STRONG, SEALED AND RESISTANT**

- Maximum facade protection provided by genuine clinker against the likes of frost, heat, driving rain, snow and hail.
- Resistant to acids, moss, algae and dirt.
- Simple to clean off external soiling, e.g. graffiti.



#### **SUSTAINABILITY**

- Energetic mode of action of the system and facade covering.
- System components can be fully recycled.
- Individual components are manufactured in a way that conserves resources.

A low-angle, upward-looking photograph of two modern high-rise buildings. The buildings are constructed from red brick and feature dark-framed windows. The perspective creates a sense of height and architectural scale against a clear, light blue sky. A white rectangular box is positioned in the upper left quadrant of the image, containing text.

## **Brick to Click®**

Enduring multi-protection for facades.  
Economical and resilient.







## The Ronson VHF System

RONSON-500 is a rainscreen facade system, from high quality galvanized or stainless steel, that allows you to make a facade of clinker tiles without using glue and grouting.

The special, patented form of the RONSON tile allowed to refuse grouting. Absence of grout allows the facade to remain truly ventilated, and also significantly increases its durability.

The RONSON system is designed to create facades for both newly constructed and renovated buildings up to 75 meters or higher.

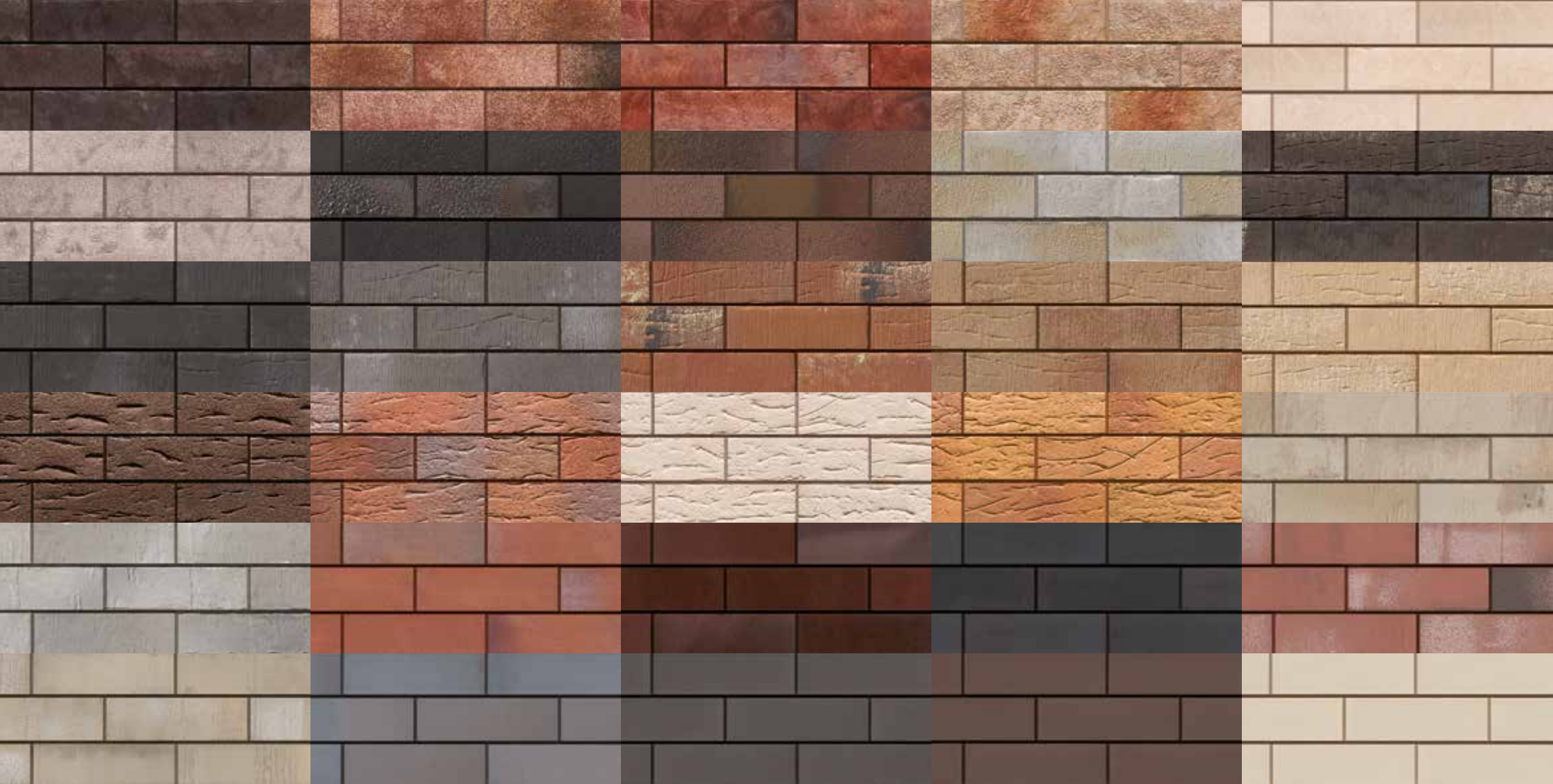
- |                               |                       |
|-------------------------------|-----------------------|
| 1. Foam concrete block        | 5. Interfloor overlap |
| 2. Horizontal sliding support | 6. Clinker profile    |
| 3. Basic shelf bracket        | 7. Insulation         |
| 4. Vertical sliding support   | 8. Clinker tiles      |











**ströher**

Clinker. Ceramics. Competence.



**Ströher GmbH** · Ströherstraße 2–10 · 35683 Dillenburg  
T. +49 02771 391-0 · F. +49 2771 391-340 · [info@stroeh.de](mailto:info@stroeh.de) · [www.stroeher.com](http://www.stroeher.com)

**STRÖHER  
GROUP.**  
SIGNATURE  
CERAMICS  
AND CLINKER.