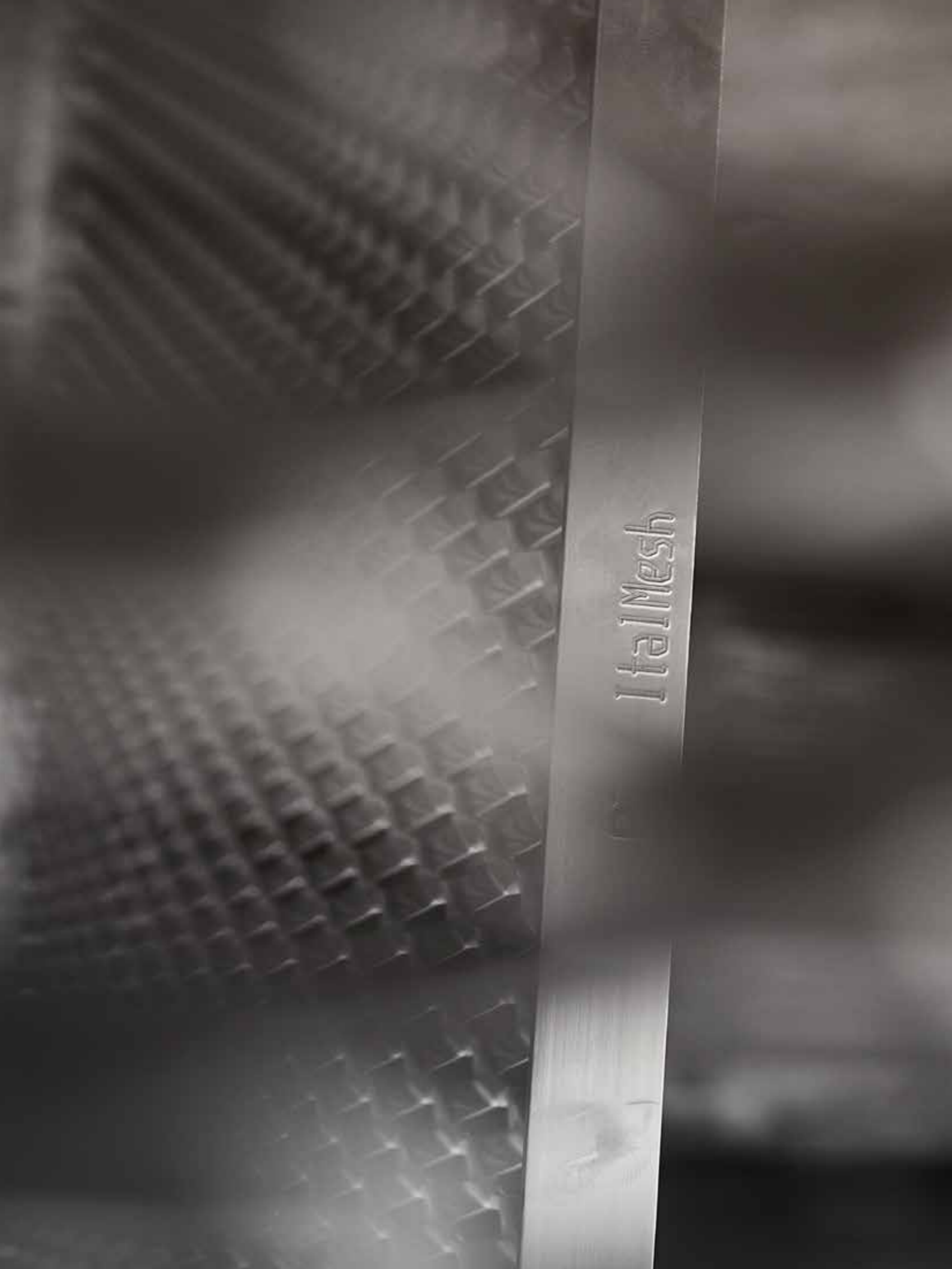


ItaMesh 



ItalMesh 
Dressing Innovative Projects



INDEX

06	ItalMesh
08	Project Solutions
10	Design & Engineering
14	Production Process
16	4.0 Company
18	Treatments and finishings
20	Quality
22	Installation
24	Research & Development
26	Products Range
28	Sustainability
30	References

DRESSING INNOVATIVE PROJECTS

ITALMESH SPECIALIZED AND TECHNOLOGICALLY ADVANCED COMPANY

ItalMesh is an Italian company specializing in the implementation of architectural projects with the use of expanded metal mesh and perforated panels, present in the national and international markets. The products made by ItalMesh can be used for exteriors as cladding for facades, sunshades, balustrades and fences and for interiors as a false ceiling and interior design. The high technology and quality of materials and workmanship, combined with the infinite combinations of shapes and colors available, allow you to blend aesthetics with functionality, making ItalMesh creations versatile and always innovative.

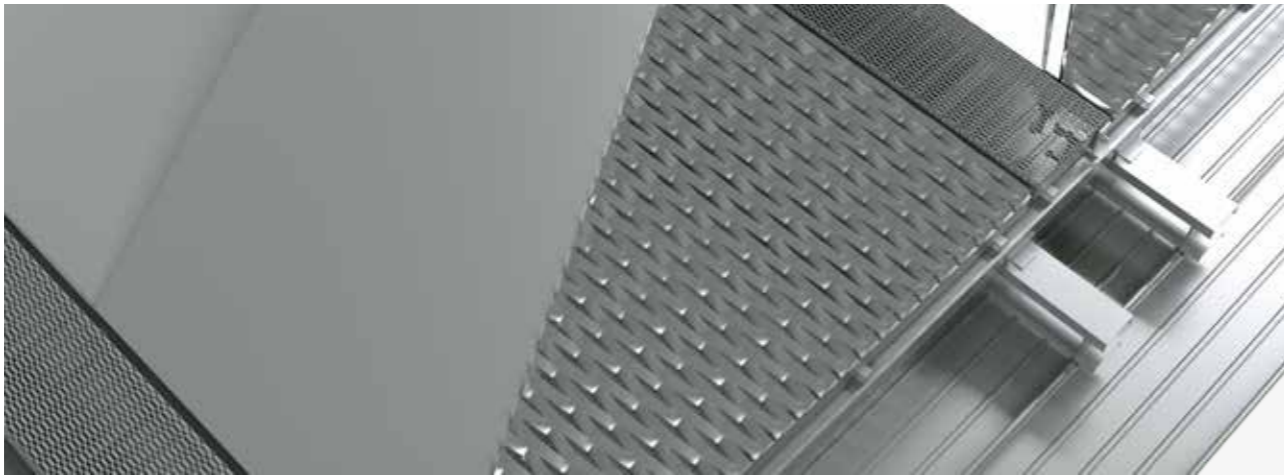
It offers more than 300 models of expanded metal and perforated custom panels, realized in different materials and with different thicknesses to the market. The innovative anchoring systems designed and patented by the ItalMesh team allow easy and quick assembly. The powder coated or anodized finish allows the material to self-clean and maintain its physical and aesthetic characteristics over time.





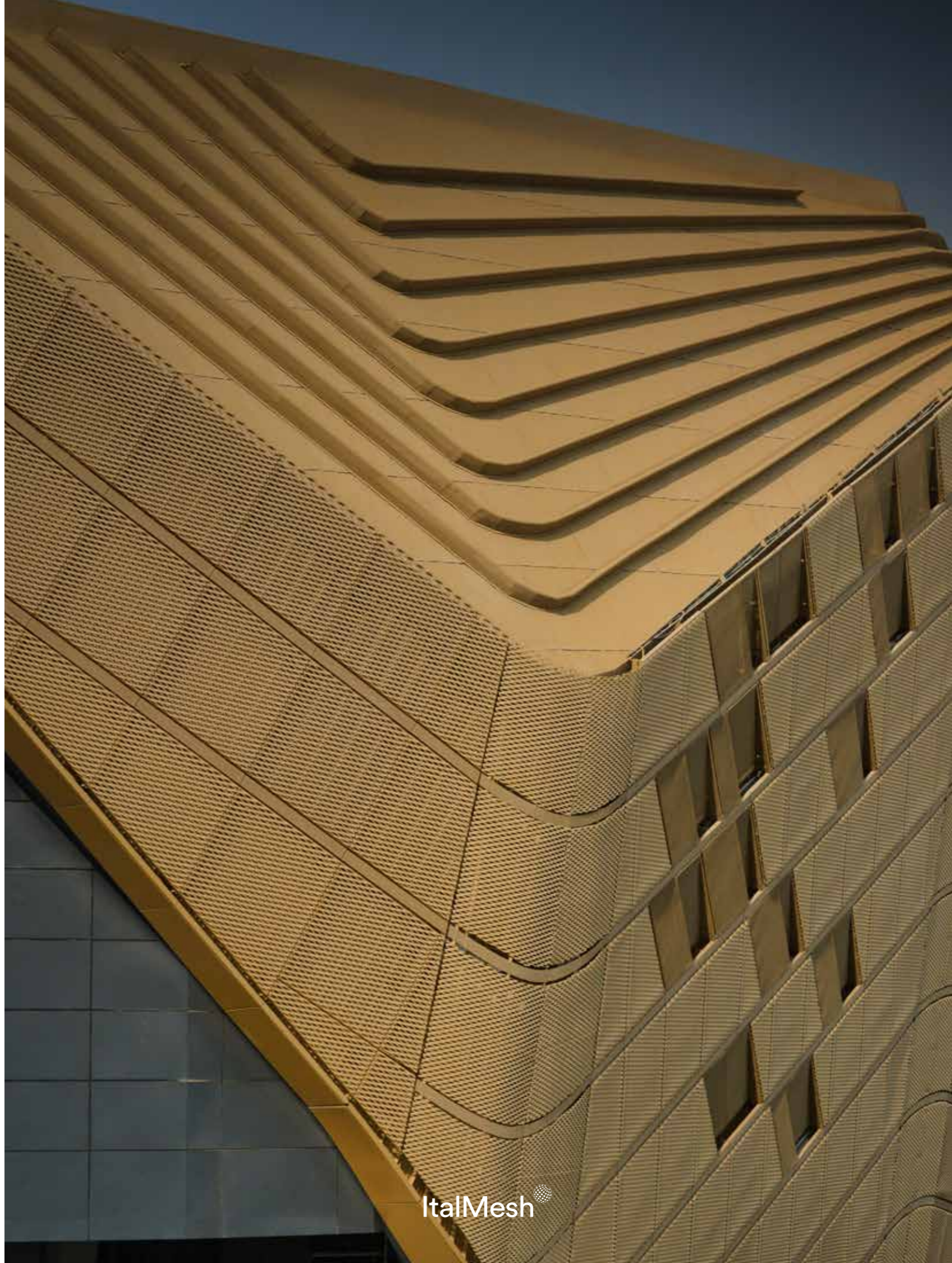
FROM THE SIMPLE TO THE MOST COMPLEX SOLUTIONS FOR ANY ARCHITECTURAL PROJECT

The goal of the ItalMesh team is to give life to the architectural project through the study of the best engineering and structural solutions, so as to be able to perfectly combine aesthetics, design, practicality and innovation. The ItalMesh team follows the customer in the realization of his project through all phases, from concept to design, engineering, product realization and installation. The continuous search for new materials, application systems and finishes give the products versatility. ItalMesh materials are not used exclusively for new buildings, but also for the modernization and redevelopment of existing buildings for which innovative solutions are proposed. ItalMesh products are customizable and satisfy customers' creativity by supporting them in transforming their ideas into reality. All materials are entirely Made in Italy, 100% recyclable, certified according to current regulations and according to national and international standards.



DESIGN & ENGINEERING

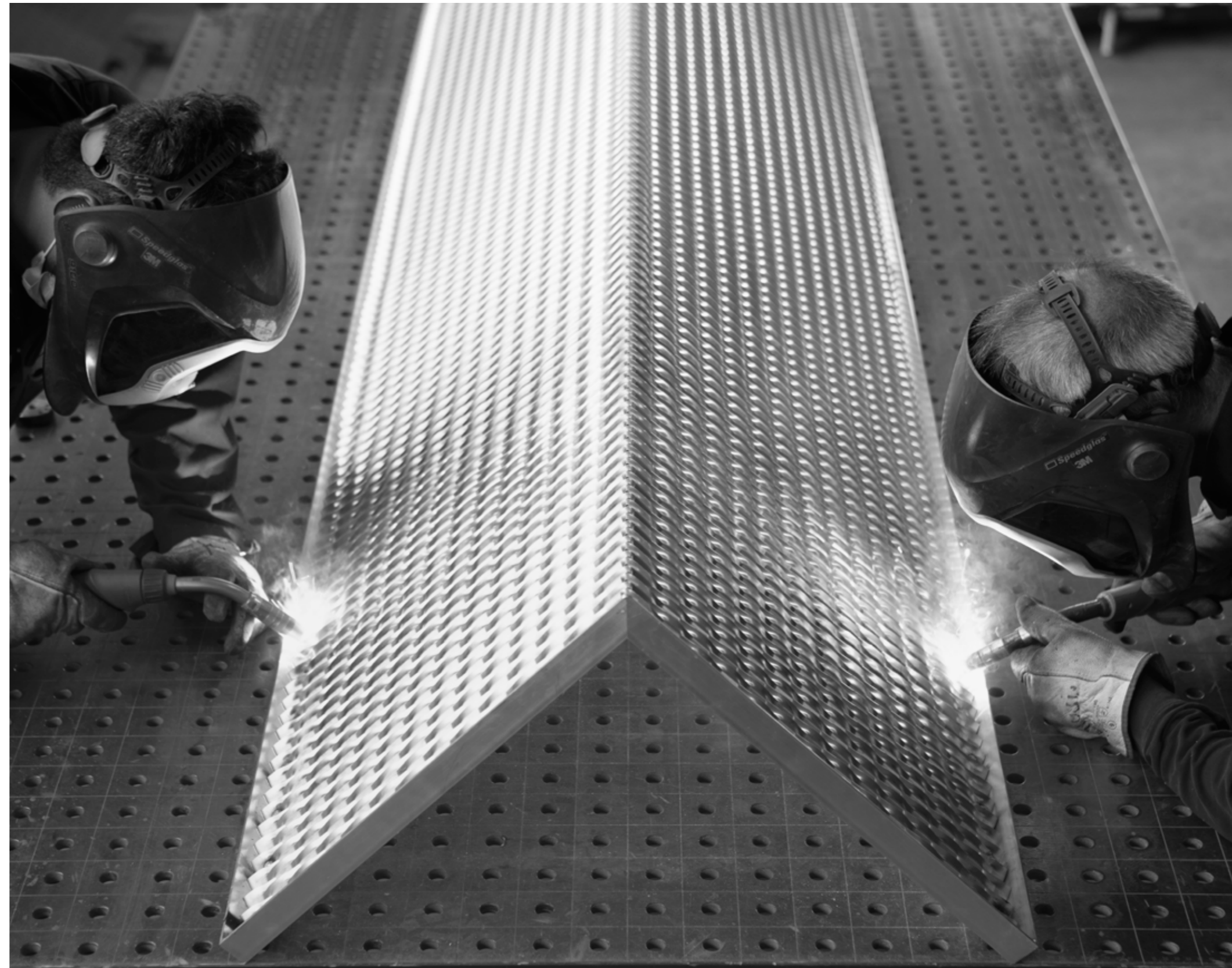
The ItalMesh team of engineers, architects and production technicians provides a complete study of the project, supporting the customer from the early design stages, up to the supervision of the installation of the material on site.

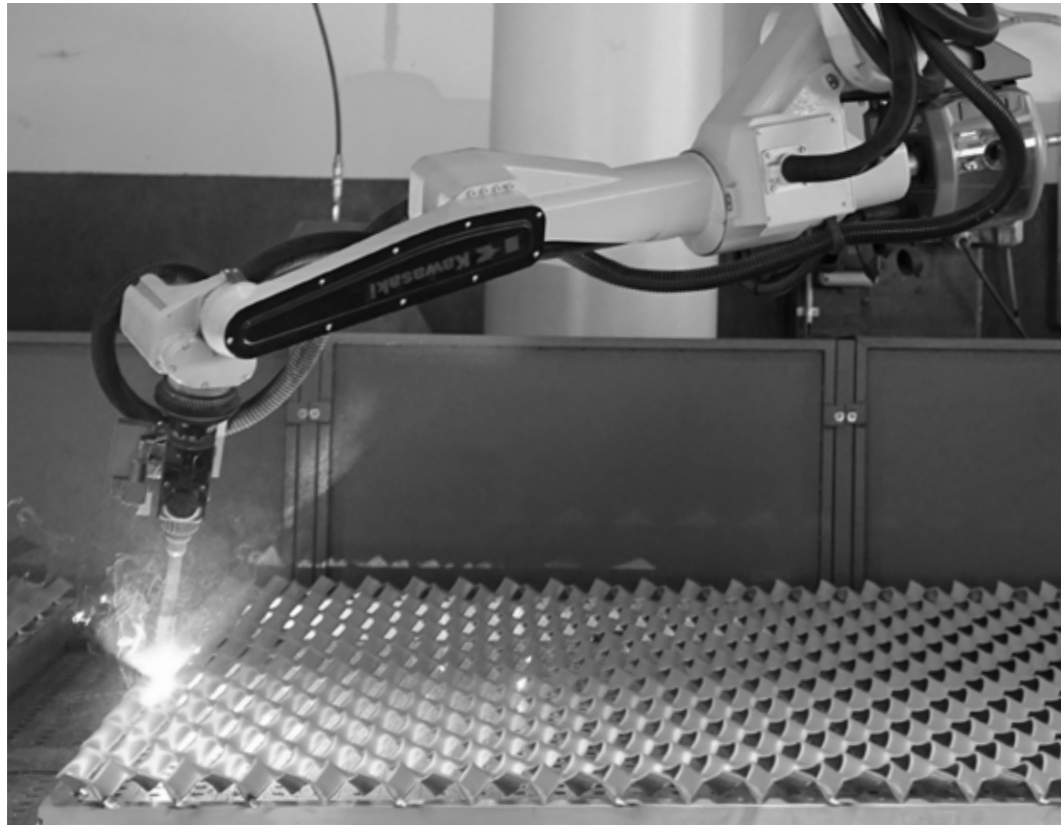


PRODUCTION PROCESS

ItalMesh production covers over 20,000 square meters and is made up of latest generation machinery interconnected and communicating with the programming and planning offices. The production areas are divided into sheet metal processing sectors with cutting and bending areas, profile processing areas with machining centers and marking machines. The robotic welding area guarantees fast times and production consistency for large and small batches of material.

ItalMesh has also dedicated an area of the plant to the creation of surface finishes, in fact inside it there are 3 latest generation painting lines, completely robotic. ItalMesh production technicians have supported the technological development thanks to their over thirty years experience in the sector.





BECOMING A 4.0 COMPANY

ItalMesh has set itself as its goal for the year 2020 automation, speeding up processes, human-machine interaction and above all traceability.

Being able to trace the production process is very important, the goods produced are easily identified, while improving quality standards. In addition, the traceability process through the marking of each individual panel greatly simplifies installation, being able to identify the correct positioning with extreme ease, leaving no room for error.

Each ItalMesh product is marked with a code, which not only identifies the product and facilitates installation, but above all allows you to trace each stage of the production process, from the purchase of the raw material to the date of shipment of the material.



SURFACE TREATMENTS, POWDER COATING AND ANODISING

The finishes are designed not only to offer special aesthetic effect that embellish each project, but also as a protective coating that allows high resistance to the most extreme climatic conditions.



POWDER COATING

The company is able to quickly provide various customized color solutions and guarantee durability and uniqueness at the same time. The paints used are composed of thermosetting resins with the addition of pigments that give the color. The painting cycle consists of 7 stages of pre-treatment in washing tunnels, painting in automated booths equipped with anthropomorphic robots, and all parameters are constantly recorded and monitored. All paints are completely non-toxic, with high resistance to UV rays and corrosion.

ANODISING

The electrolysis process is carried out in special tanks crossed by electric current in which, in addition to the modification of the molecular structure of the metal, the coloring of the same takes place. A protective oxide layer forms on the surface of the treated metal and protects it from corrosion. The electrochemical treatment of metal surfaces can be carried out for different purposes: to improve corrosion resistance; improve resistance to wear and abrasion; effectively apply the powder coating and achieve a low thickness in the paint.

QUALITY

Quality in ItalMesh is seen by the whole company as a tool to improve customer satisfaction and as a stimulus for better operational efficiency. The correct and consistent definition of processes supports collaboration between all departments, production and support. Since 2010, the ISO 9001 and ISO 14001 certification has been achieved, in addition to the ESMA certification, specific for the Middle Eastern markets. In 2021 ItalMesh obtained ISO 17065 certification (ASTM D1929-20 E UNI EN 1350-1:2019) for reaction to fire. The careful choice, evaluation of raw material suppliers and close collaboration with partners is a fundamental aspect that guarantees high quality standards.



ISO14001
ENVIRONMENTAL CERTIFICATION



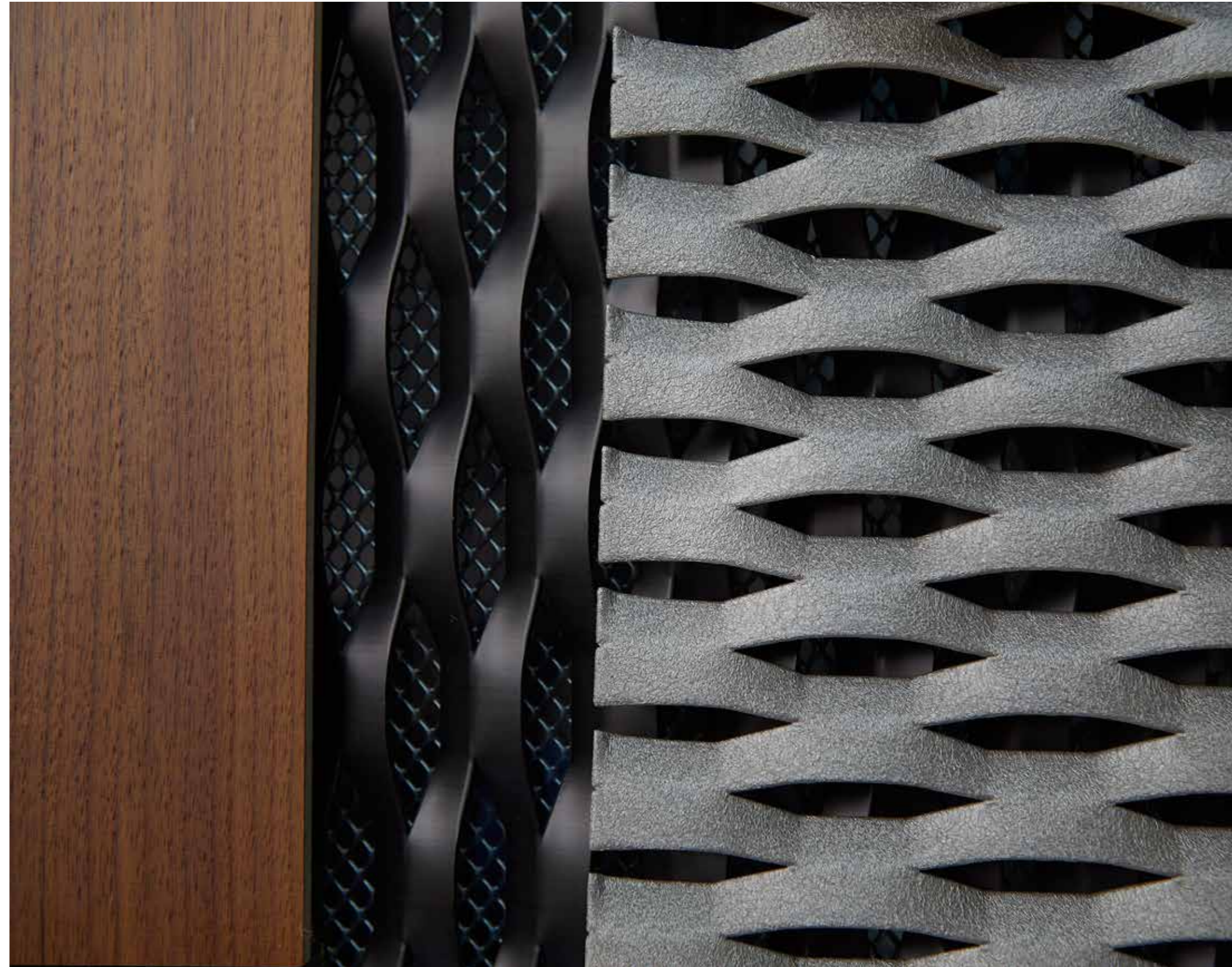
ISO9001
PROCESS CERTIFICATION



ISO17065
CERTIFICATION FOR REACTION TO FIRE
(ASTM D1929-20 E UNI EN 1350-1:2019)



CERTIFIED IN CONFORMITY WITH ESMA
(Emirates Authority for Standardization
and Metrology)





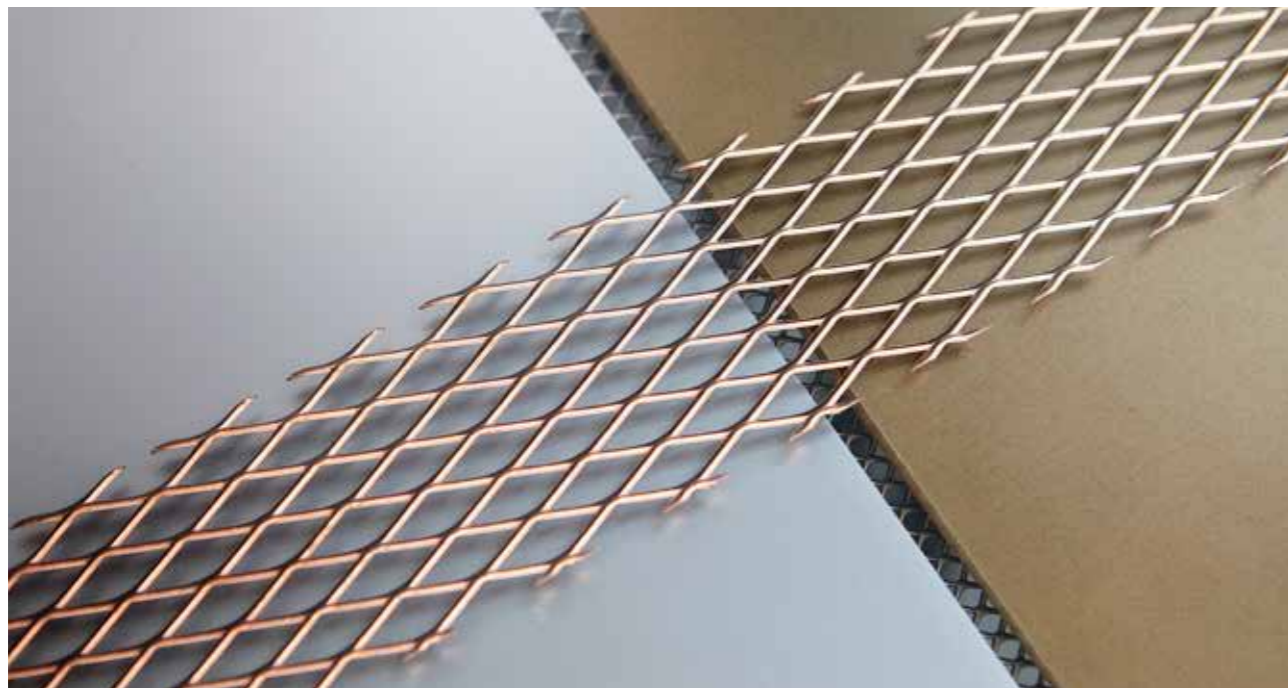
WE FOLLOW OUR PROJECTS FROM THE INITIAL PHASE TO INSTALLATION

The patented fixing methods have been specially designed by the ItaiMesh team so that installation is quick and easy. The panels installed with ItaiMesh systems are removable. ItaiMesh has achieved the RT-05 certification (Accredia Technical Regulation 05) which contains provisions for the assessment and certification of the Quality Management Systems (ISO 9001: 2015) of the construction and installation companies of plants and services operating in the construction sector. This regulation provides guidelines for the management of site access and management documentation which, in addition to the safety aspects, includes a series of documents to provide complete traceability of the product. Being able to identify each single panel is essential given the complexity of some projects and given guarantees.

RESEARCH AND DEVELOPMENT FOR CUSTOM PROJECTS

ItalMesh wanted to create within the company a team dedicated to RESEARCH & DEVELOPMENT in order to be able to fulfill the most varied requests of its customers. Each solution proposed by ItalMesh is always different and original, with attention to practicality and functionality. Made-to-measure means engineering of dimensions, to reduce scraps and therefore costs. The finishes guarantee durability over time and therefore contribute to eco-sustainability, today a must for a careful and responsible society.

Production flexibility to guarantee freedom of “creative composition”. The design of the coatings must also take into account the specific needs related to the intended use and construction constraints dictated by the executive drawings. Standard “modules” cannot always be maintained for the entire extension of the cladding, whether horizontal or vertical. Elements to complete the edges to measure or even the totality of the shaping elements can be used. Curved or folded elements, shaped, triangular or polygonal shapes, even drawn one by one, can often be used. Thanks to the characteristics of the expanded metal, to the technology and to the specialized processes, ItalMesh provides the maximum guarantee for both small and large projects.



100%
Made in Italy



100%
Recyclable

The strength of ItalMesh is the tailor-made realization. For the architecture sector, completely customized products come out from the production departments, in size and shape, in finishes and mounting systems. This simplifies the designer’s work and optimizes costs.

PRODUCTS RANGE

The more than 300 models of expanded mesh that ItalMesh offers to the market can be made of iron, aluminum, stainless steel, corten, copper and brass, with thicknesses ranging from 0.5 mm up to 5 mm. The expanded meshes, with the alternation of curved and flat surfaces, the effect of full and empty spaces, with plays of light and shadows create unmistakable aesthetic effects. The capacity and production innovation have allowed ItalMesh to create panels with customized designs through the different types of drilling and laser cutting, which find application in architectural field.

MODULARITY

From the simplest to the most complex solutions for any architectural project.

EASE

The technological solutions allow fast and simple installation.



QUALITY

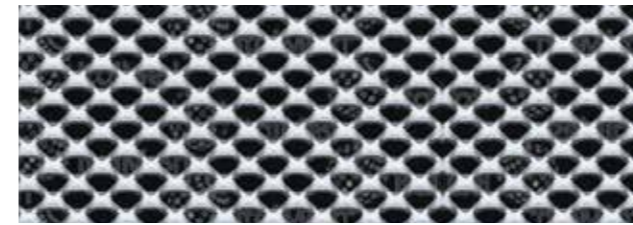
The jerseys are sturdy, light and always perfectly coplanar.

EFFECTS

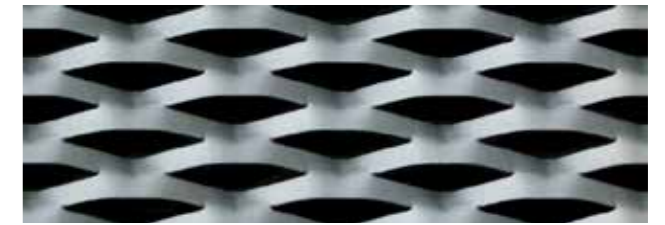
Expanded meshes create extraordinary effects that meet the client's creativity, with always innovative products.

CREATIVITY

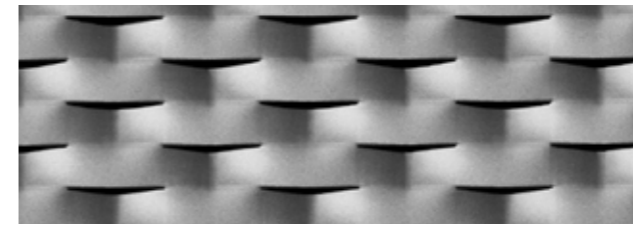
ItalMesh is able to provide various colors and finishes and to create three-dimensional and innovative shapes.



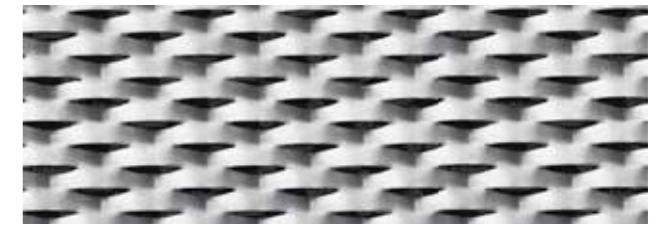
AQUILA



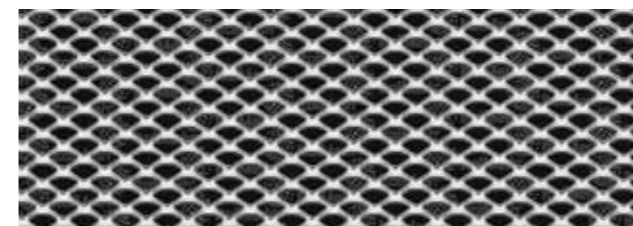
BRESCIA



COMO



MILANO



RIMINI



ROMA



SIENA



TORINO



VENEZIA



VICENZA

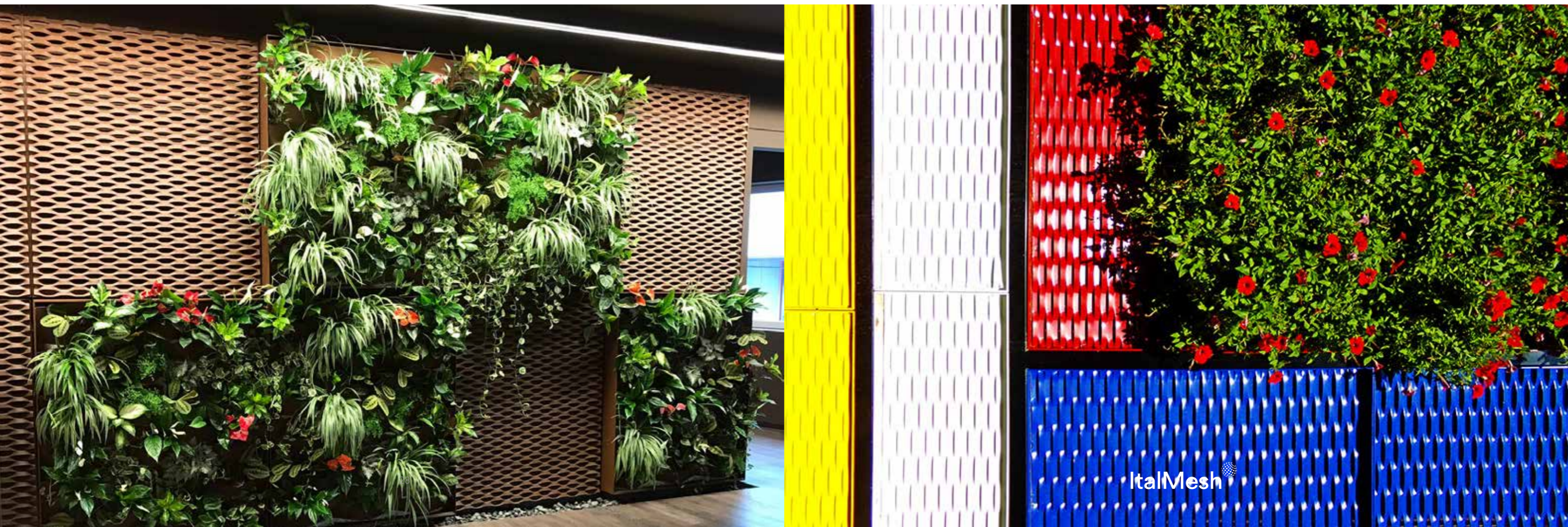
ITALMESH IS A GREEN COMPANY

ItalMesh has always supported the use of eco-sustainable technologies with low environmental impact. Within the production plant, a strongly focused policies have been implemented to separate waste collection, its recycling as well as the recovery of the raw materials used, mainly steel and aluminum. Since 2018, ItalMesh's production has been powered 90% by energy produced by the photovoltaic system installed above the plant. ItalMesh has a green heart, not only given by all the ecological initiatives carried out within the company, but also by the products developed from an ecological perspective.

Zero Gravity Eden, a patented vertical garden, is a 100% sustainable product, not only for the enrichment of green areas in metropolitan and industrial areas, but also for the important reduction of CO₂.

ZERO GRAVITY EDEN

Zero Gravity Eden is the green project in support of sustainable architecture by ItalMesh. The expanded metal meshes are transformed into a real vertical garden. These are green walls designed to cover buildings with the objectives of optimizing energy performance, improving their aesthetics and reducing CO₂. The product includes an automatic irrigation system and involves the cultivation of plants of multiple species selected by the team of agronomists and landscape architects who support the customer in choosing the best plants and seeds for the realization based on the location of the project. In collaboration with the Politecnico di Milano, patented Zero Gravity Eden panels were installed inside the University Center, to test the benefits of the environmental impact of the Green Walls, in a metropolitan city like that of Milan.



ITALMESH HEADQUARTER

The project involves the cladding and redevelopment of the entire facade of the Montirone headquarters. For this intervention, Siena 150 model expanded metal meshes in aluminum and Zero Gravity Eden vertical garden panels were used. The effect of vertical green and expanded metal gives the industrial structure elegance and dynamism, with an eye to eco-sustainability and environmental protection, in fact the vertical garden modules guarantee thermal and acoustic insulation, as well as a significant reduction of the CO₂.

LOCATION

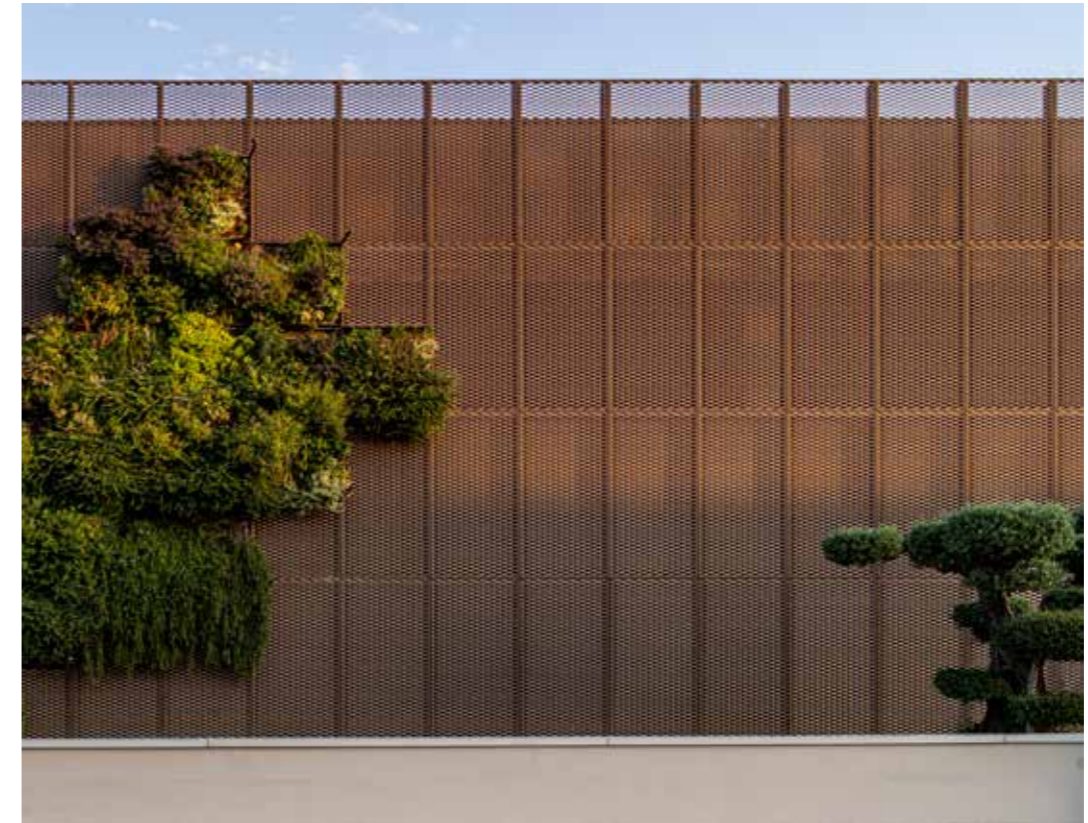
Brescia - Italy

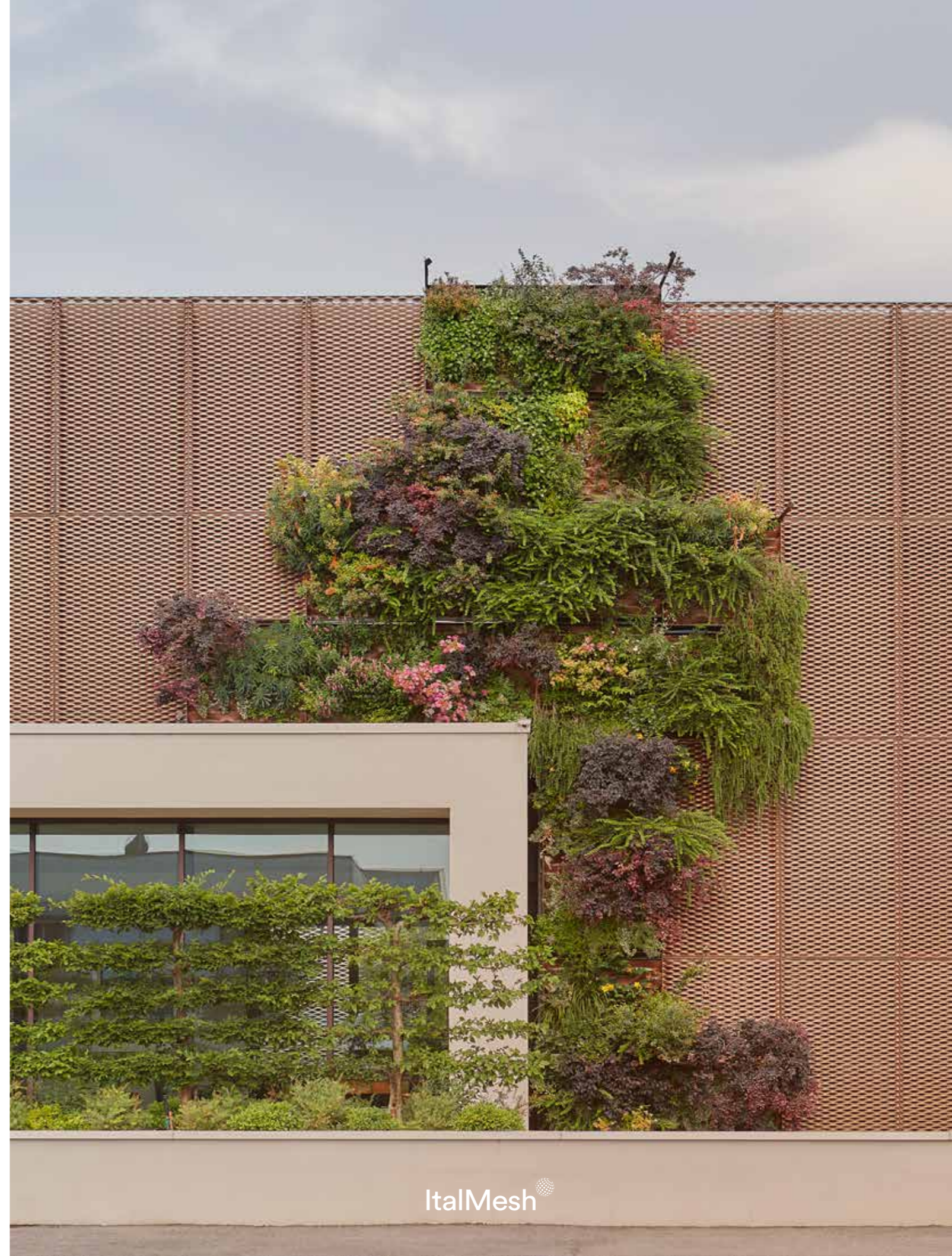
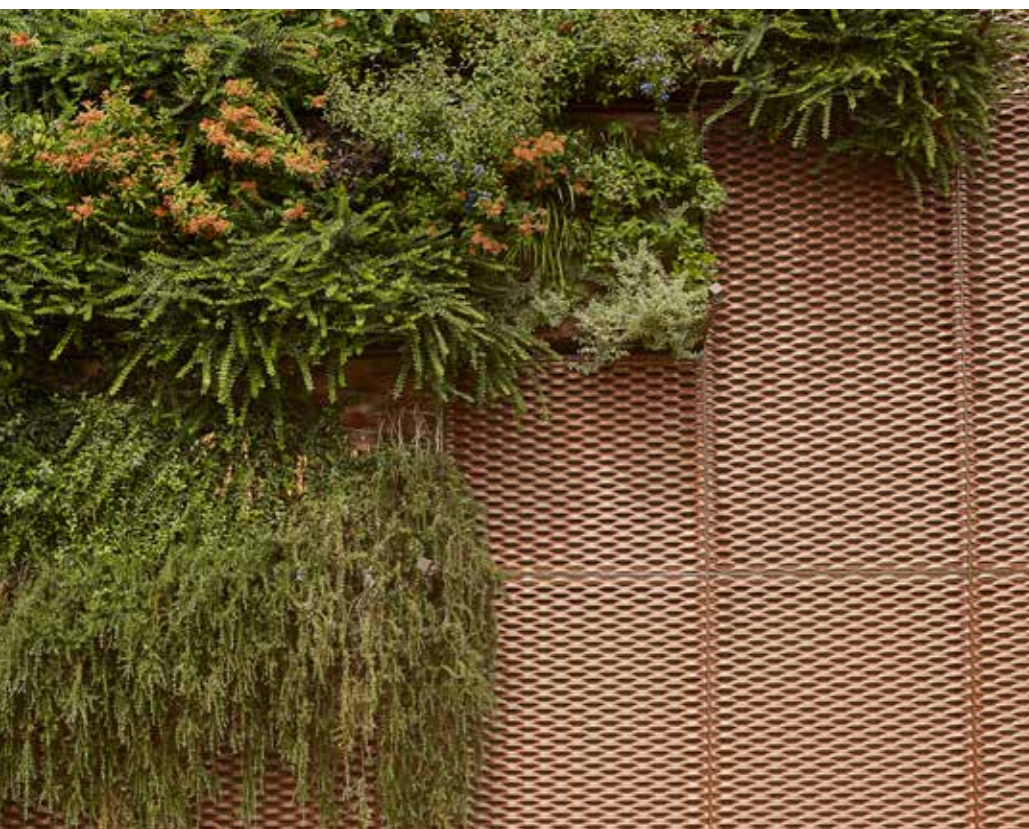
TOTAL M²

1500

MESH

Siena 150 / Zero Gravity Eden





ETIHAD ARENA

Etihad Arena is the largest and most cutting-edge indoor entertainment venue in the Middle East. It is located on the lively waterfront of Yas Bay on Yas Island, one of the largest man-made islands built in Abu Dhabi. The construction was completed in 2021 and hosts a wide range of events: concerts, theatrical performances, sporting events and celebrations. An iconic design inspired by the intertwined meshes of the baskets used by the Bedouin tribes and a modern structure that nevertheless wants to have a close ties with the history of the country. ItalMesh participated in the design, engineering and construction of all the modules used for the cladding of the external facades of the arena. The technicians conducted the study for over a year in order to find the ideal solution for the installation of over 28,000 expanded mesh panels. The ItalMesh team followed every phase of the engineering and production process, verifying aesthetic, functional and guarantee aspects with the engineers and architects in charge of the work. Precisely for this reason, high quality raw materials and finishes with pluriannual guarantees were chosen. Etihad Arena is not only a modern architectural structure, but also a 100% sustainable construction.

LOCATION

Abu Dhabi - UAE

TOTAL M²

25000

MESH

Brescia 200R / Roma 65 / Rimini 15 / Siena 45





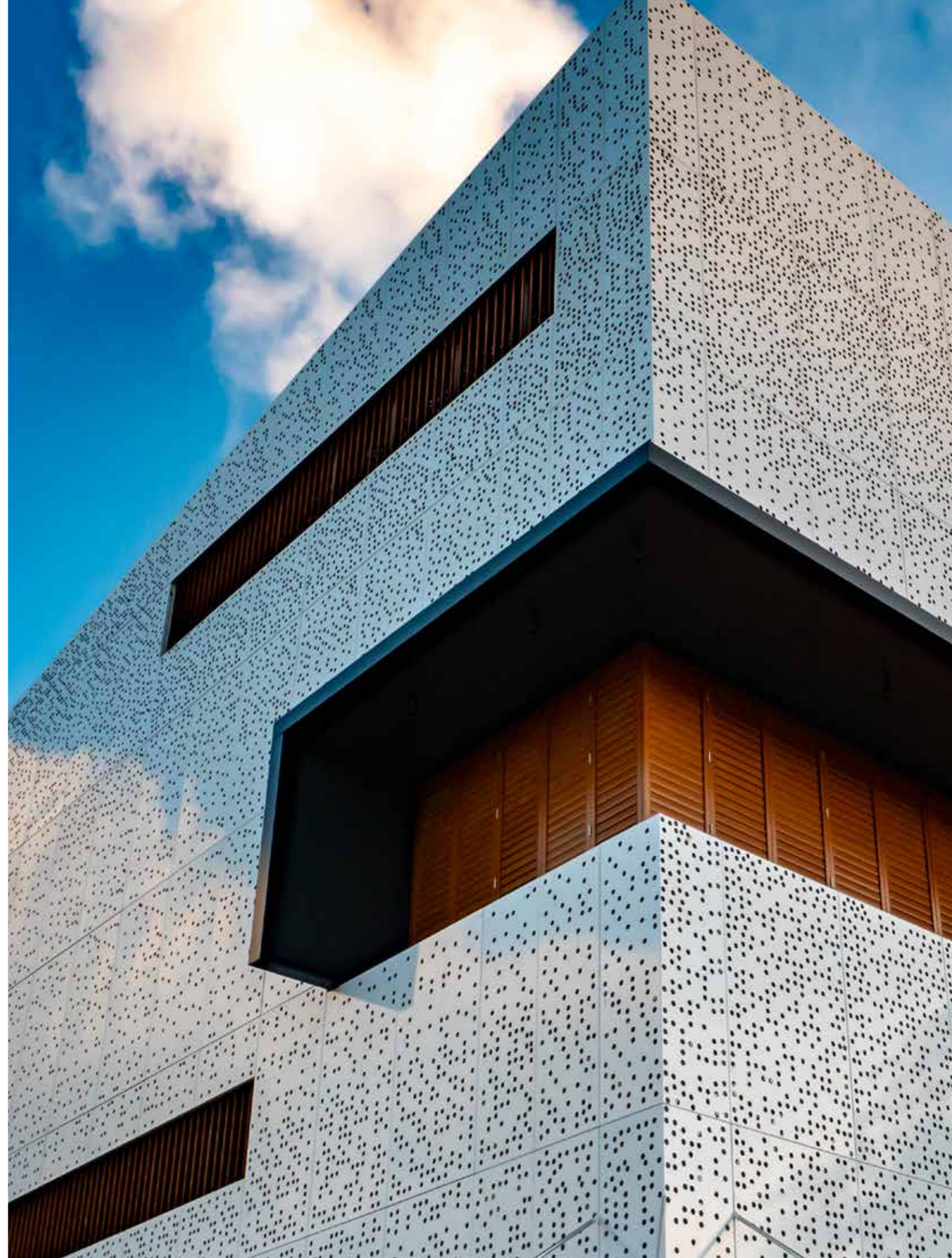
DOCKLANDS

The project carried out in Victoria, a city in the Seychelles islands, involves the cladding of the facade of the Docklands multipurpose center, with 3 mm thick perforated aluminum sheet panels. Cladding and holes design was completely conceived and implemented by the ItalMesh team. The project takes on a new elegant dress when the sun goes down, in fact, by exploiting the play of full and empty, the facades of the multipurpose center become real lighting fixtures, transforming the building into a lantern.

LOCATION
Victoria - Isole Seychelles

TOTAL M²
1200

MESH
Perforated sheet panels







GUARNI & MED

Cladding of an industrial complex in the province of Bergamo for which 700 panels of ItalMesh model Siena 150 expanded mesh, powder coated Metalized Bronze and 50 modules of Zero Gravity Eden vertical garden were used. The façade, in addition to having a strong aesthetic impact, thanks to the installation of vertical garden panels, has become 100% sustainable.

LOCATION
Bergamo - Italy

TOTAL M²
2500

MESH
Siena 150 / Zero Gravity Eden



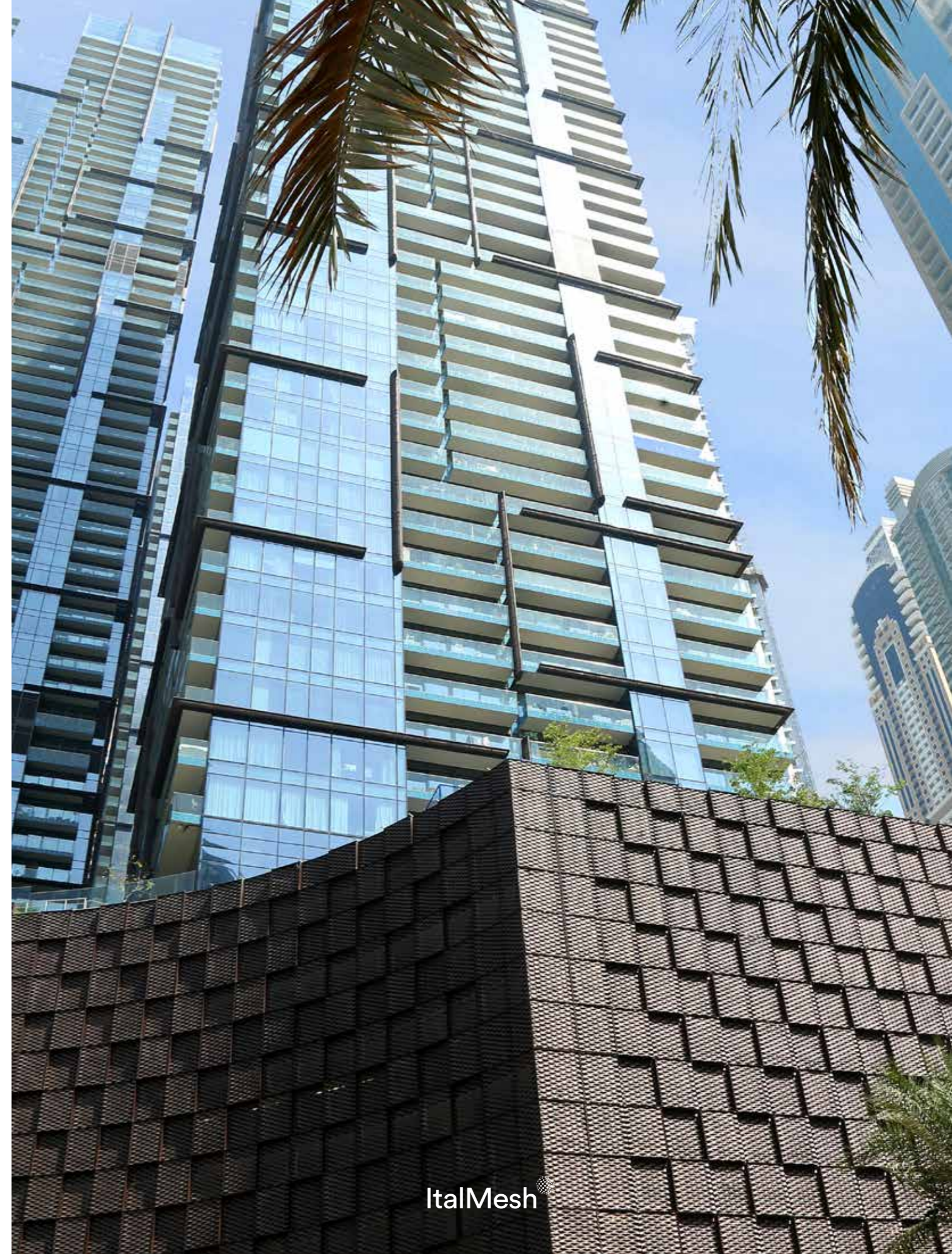
MARINA GATE

ItalMesh network panels were used for the cladding of the facade of the multi-storey car park of the Marina Gate buildings, which overlook the Dubai Marina. The Siena 400 model meshes in aluminum, powder coated, have been used in a way to create a game of contrasts while guaranteeing transparency and shading. Very unique and innovative facade.

LOCATION
Dubai - UAE

TOTAL M²
2000

MESH
Rimini 45



ALFA ACCIAI

The project involves the redevelopment of the office building and the entrance of the Brescian company. To carry out this project, ItalMesh Siena 150 expanded mesh panels and Zero Gravity Eden vertical garden panels were used. This solution is optimal for reducing emissions from production plants and for beautifying buildings.

LOCATION
Brescia - Italy

TOTAL M²
800

MESH
Siena 150 / Zero Gravity Eden





EIFFEL

Building overlooking the main street of Dubai Sheikh Zayed Road, designed to house showrooms and shops.

ItalMesh supplied the panels for the window covering of the entire facade that follow the oblique course of the building.

The panels have been entirely customized and made with different types of mesh, in order to emphasize the geometries and the three-dimensional optical effects.

LOCATION

Dubai - UAE

TOTAL M²

650

MESH

Brescia 75 / Torino 40



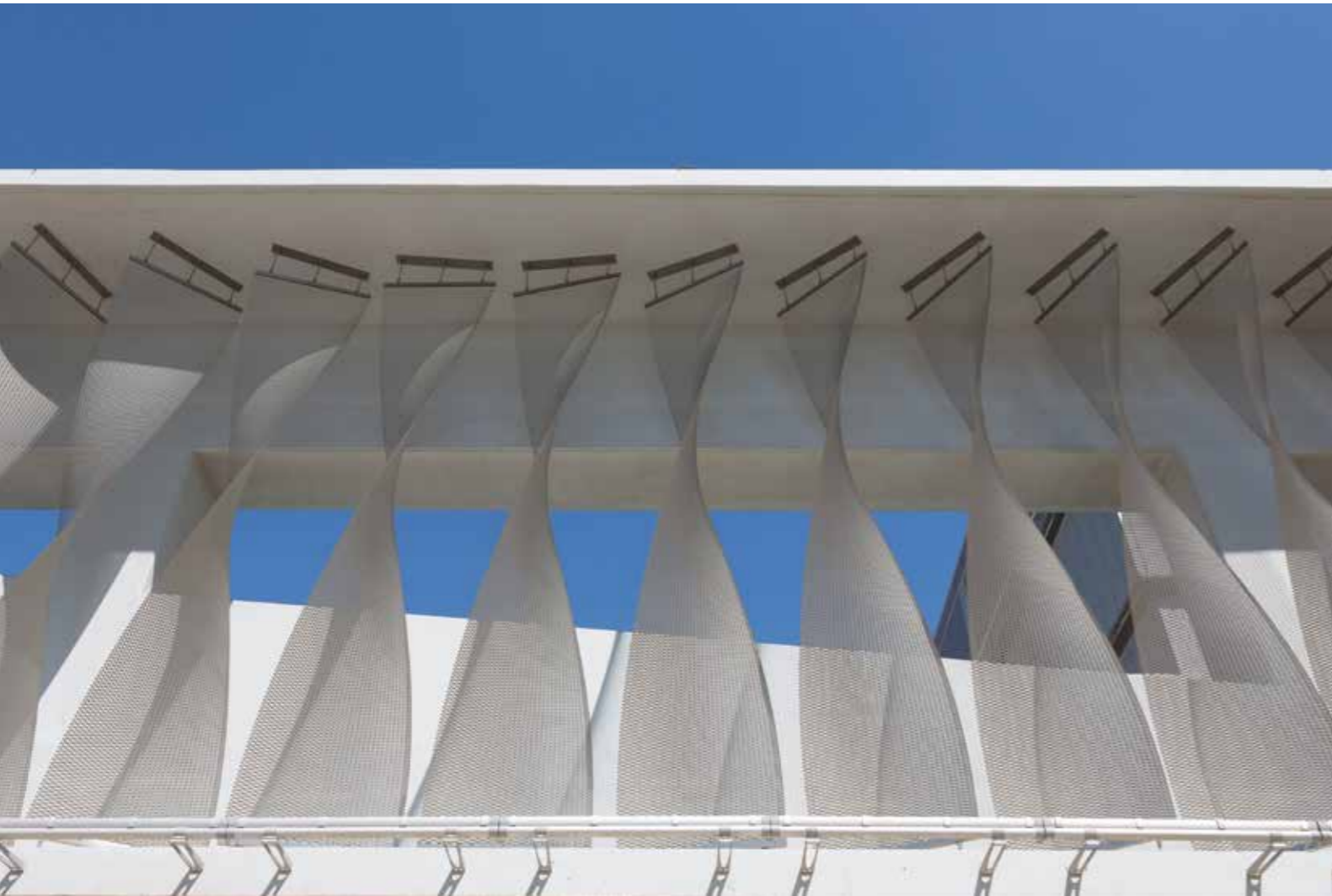
YAS MALL

Yas Mall is the most innovative and attractive shopping and entertainment destination in the heart of Yas Island in Abu Dhabi. ItalMesh products were used for the cladding of the facades of the multi-storey car park, the largest in the world that can accommodate up to 10,000 cars. The Roma 65 meshes in AISI 316L, painted with a clear cote transparent finish, have been installed with an innovative design that creates a three-dimensional effect.

LOCATION
Abu Dhabi - UAE

TOTAL M²
6000

MESH
Roma 65



CASPIAN WATERFRONT

Caspian Waterfront, observatory in Baku, is a construction with a contemporary design, which recalls the architectural forms of Azerbaijan. The expanded ItalMesh Brescia 200 model 4 mm thick meshes, which cover the central part of the structure, have been created and modeled with a double curvature one by one, recreating the movements and sinuosity of the flowers. The thickness used was defined after structural calculations in order to be able to withstand the ice load, but at the same time allows for thermal expansion due to high summer temperatures. Starting from flat geometric shapes, the ItalMesh team has developed a three-dimensional model that can be adapted to the surface of the project. Each panel has been studied individually and with extreme precision, as they are developed on different Cartesian planes.

LOCATION
Baku - Azerbaijan

TOTAL M²
3000

MESH
Brescia 200





CANTARELLI

Cladding of the warehouse and office building of a company dedicated to the storage and aging of Parmigiano Reggiano in Felino, in the province of Parma. The architect was inspired by the history and tradition of the geographical area, in fact the coating, made with the Siena300R model mesh, recalls the shape of the cheese that the company processes. The panels have been entirely profiled, calendered and press-folded with a particular processing in order to obtain the desired result. The color of the untreated forms of Parmigiano Reggiano is black, and to maintain a link with tradition it was decided to use the matt black RAL 9005.

LOCATION
Parma - Italy

TOTAL M²
700

MESH
Siena 300R





DUBAI MALL EXTENSION

ItalMesh has been chosen as the supplier for the expansion of the “Dubai Mall” shopping center in Dubai. ItalMesh took care of the cladding of the building facades and the construction of the false ceilings.

For the façades, expanded metal BRESCIA 400 model in aluminum sp 3 mm, powder-coated in RAL 9007 color, and for the false ceiling model RIMINI 40 in steel, powder-coated in black RAL 9005 color, were used.

LOCATION

Dubai - UAE

TOTAL M²

7000

MESH

Brescia 400 / Rimini 40 / Brescia 200



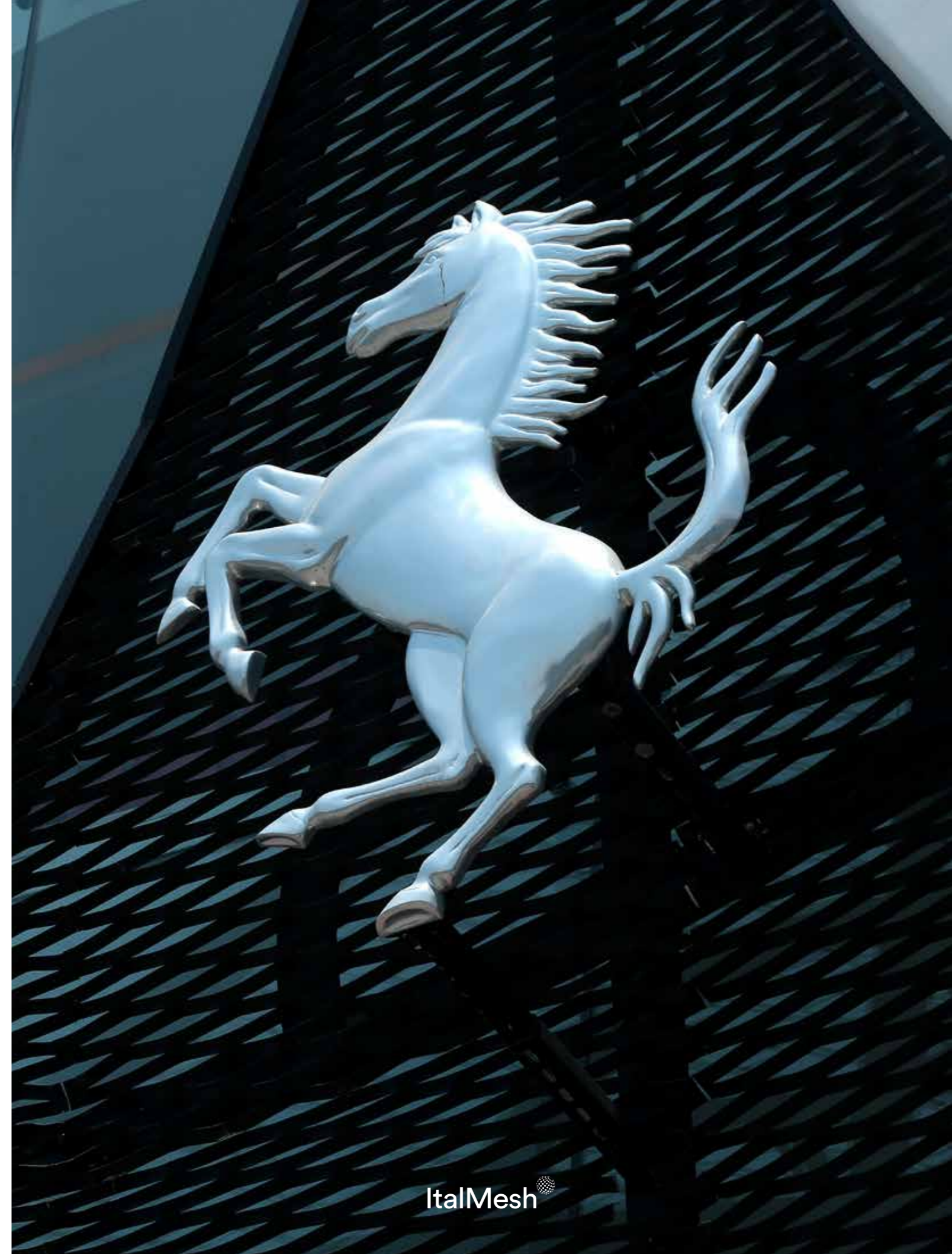
FERRARI & MASERATI SHOWROOM

ItalMesh contributed to the creation of the Ferrari and Maserati showroom in Dubai. Expanded meshes were used for shielding the entrance to the building. To obtain the sinuous effect desired by the customer, the ItalMesh team proceeded to create a double curvature of the water-jet cut nets. The model used is Brescia 250 in aluminum, 2 mm thick; the bed bases were powder coated with matt ral 9005 color.

LOCATION
Dubai - UAE

TOTAL M²
400

MESH
Brescia 250



ALEJA LJUBLJANA

The cladding of the facade of the shopping center in Ljubljana, created in collaboration with the Pichler company, involves the use of different materials. ItalMesh contributed to its realization, supplying 530 ROMA 85 and BRESCIA 200 mesh panels in powder-coated aluminum. To satisfy the client, the panels were water-cut in a rhomboid shape and entirely profiled, so as to make the structure rigid and flat.

LOCATION

Ljubljana - Slovenia

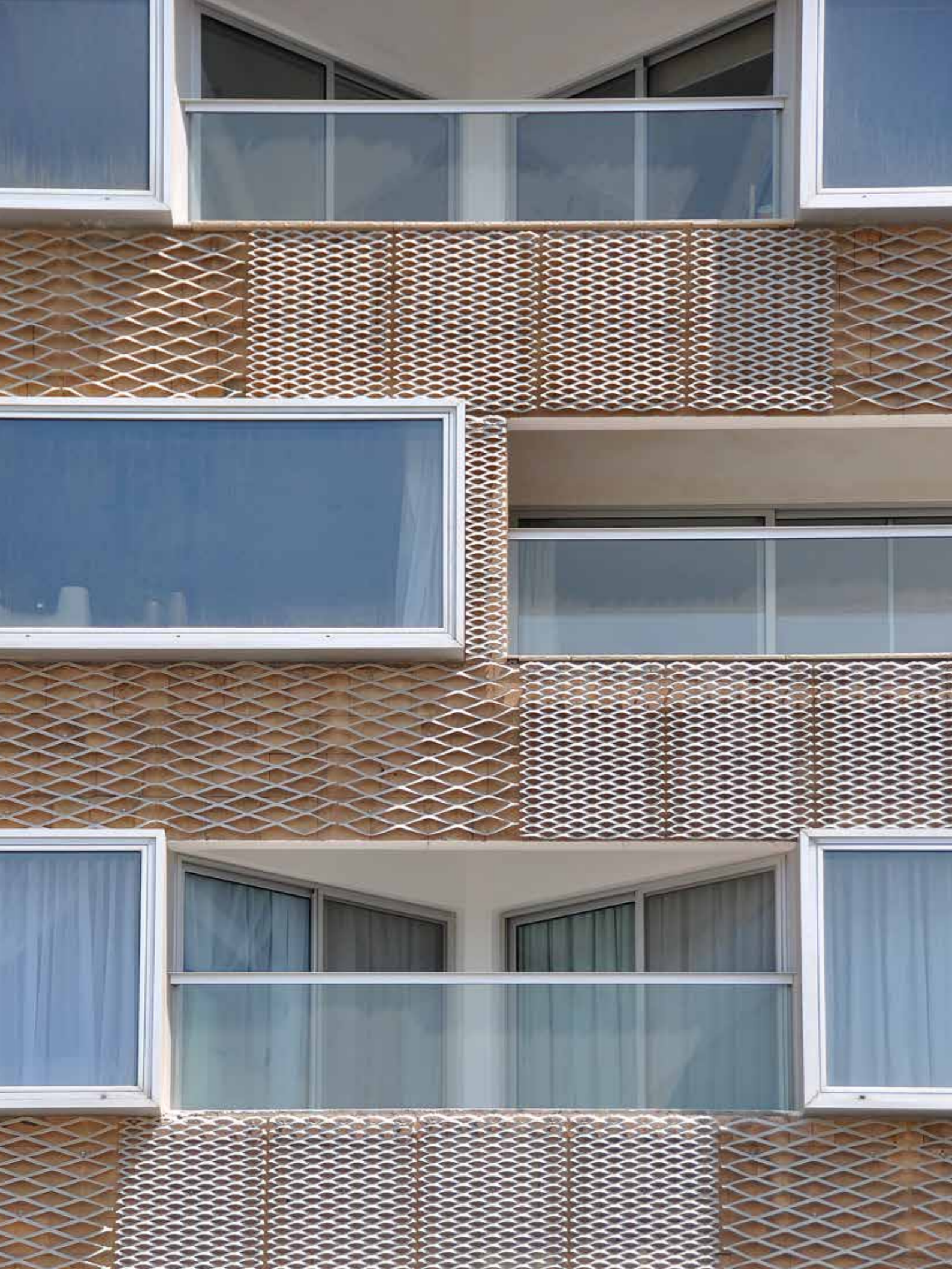
TOTAL M²

600

MESH

Roma 85 / Brescia 200





PEARL MARZOUQ

Pearl Marzouq is a historic building, located in the "Laala (Pearl) Al-Marzouq" area in Kuwait, which occupies an area of 5,600 square meters in Ras Al-Samiya. ItalMesh was chosen by the property and the design studio Pad10 for the redevelopment of the facade of the entire building using expanded aluminum mesh. To give the building a dynamic appearance, ItalMesh used two different models of expanded mesh, the Brescia 200 and Brescia 400 model, painted with powder paint to make them extremely resistant, in consideration of the climatic aspects of the area.

LOCATION

Kuwait City - Kuwait

TOTAL M²

13000

MESH

Brescia 200 / Brescia 400



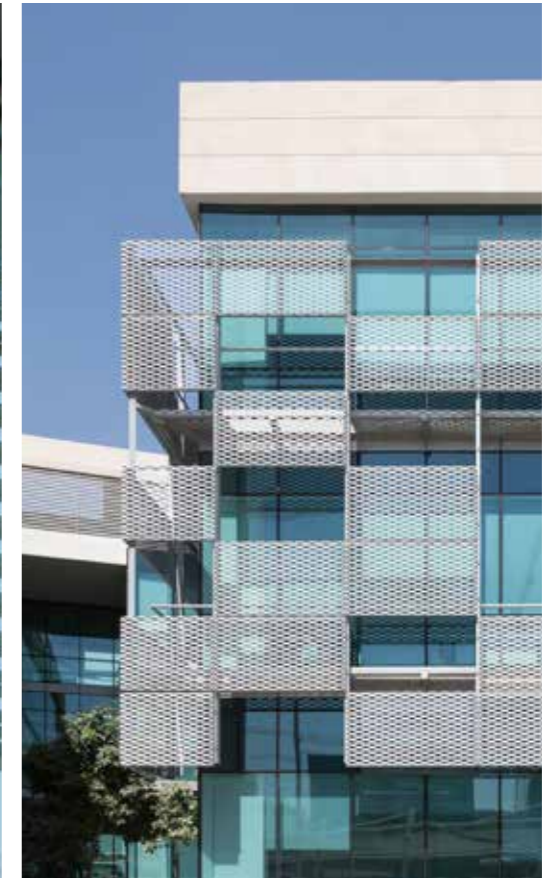
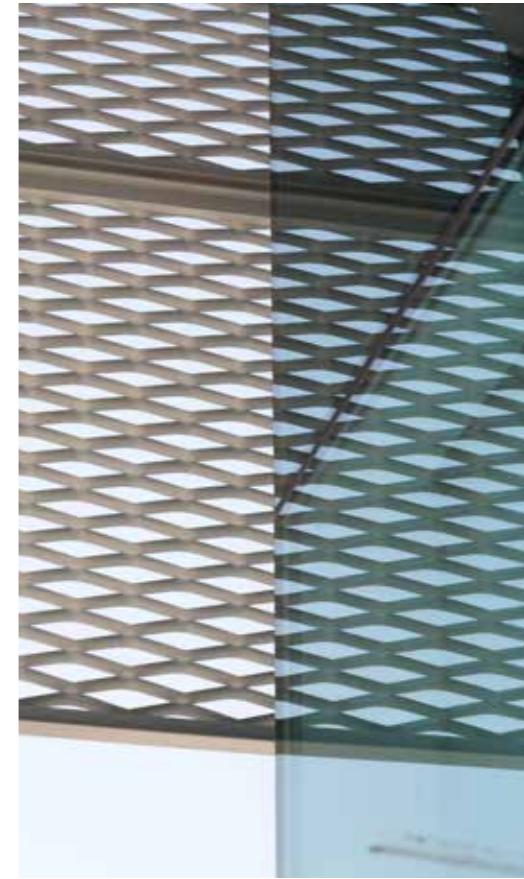
DSO TECHNO HUB

The first Smart City project wanted by the strategic management of the Dubai government, Techno Hub includes offices, residences, commercial spaces, spaces for sports and entertainment. The buildings were designed to be completely made of glass, but in order to be able to shield some areas, the designers created solar shading with expanded mesh. ItalMesh has created and installed the panels on a structure with uprights painted in gray - RAL 9006.

LOCATION
Dubai - UAE

TOTAL M²
2000

MESH
Brescia 200



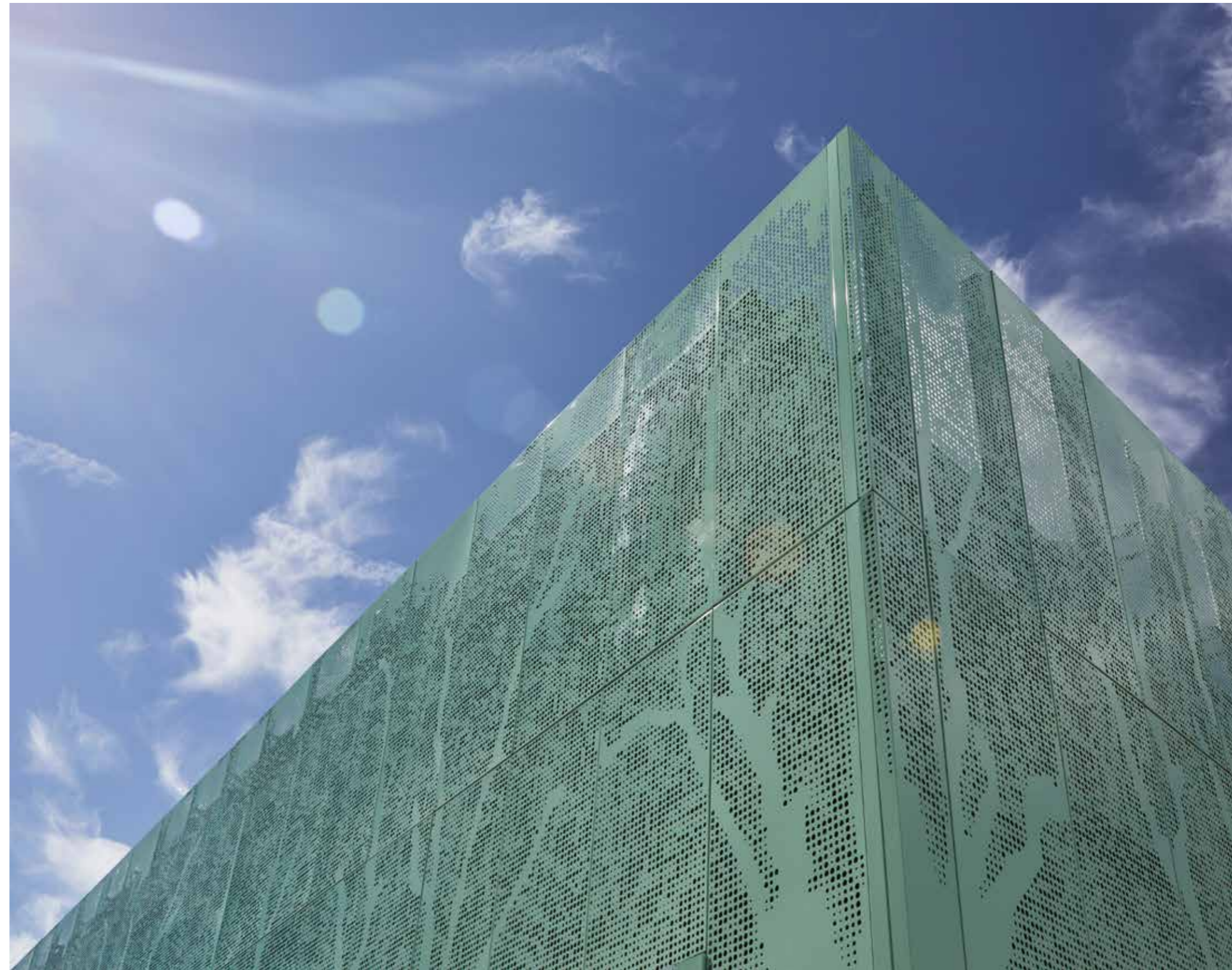
SYMBIAGRO

Cladding of an industrial building made with perforated aluminum sheet panels, 3 mm thick. The design of the coating and the design of the holes have been completely conceived and implemented by the ItalMesh team in accordance with the customer's expectations. The panels were painted with high-strength paint in NCS color.

LOCATION
Brescia - Italy

TOTAL M²
750

MESH
Perforated sheet panels





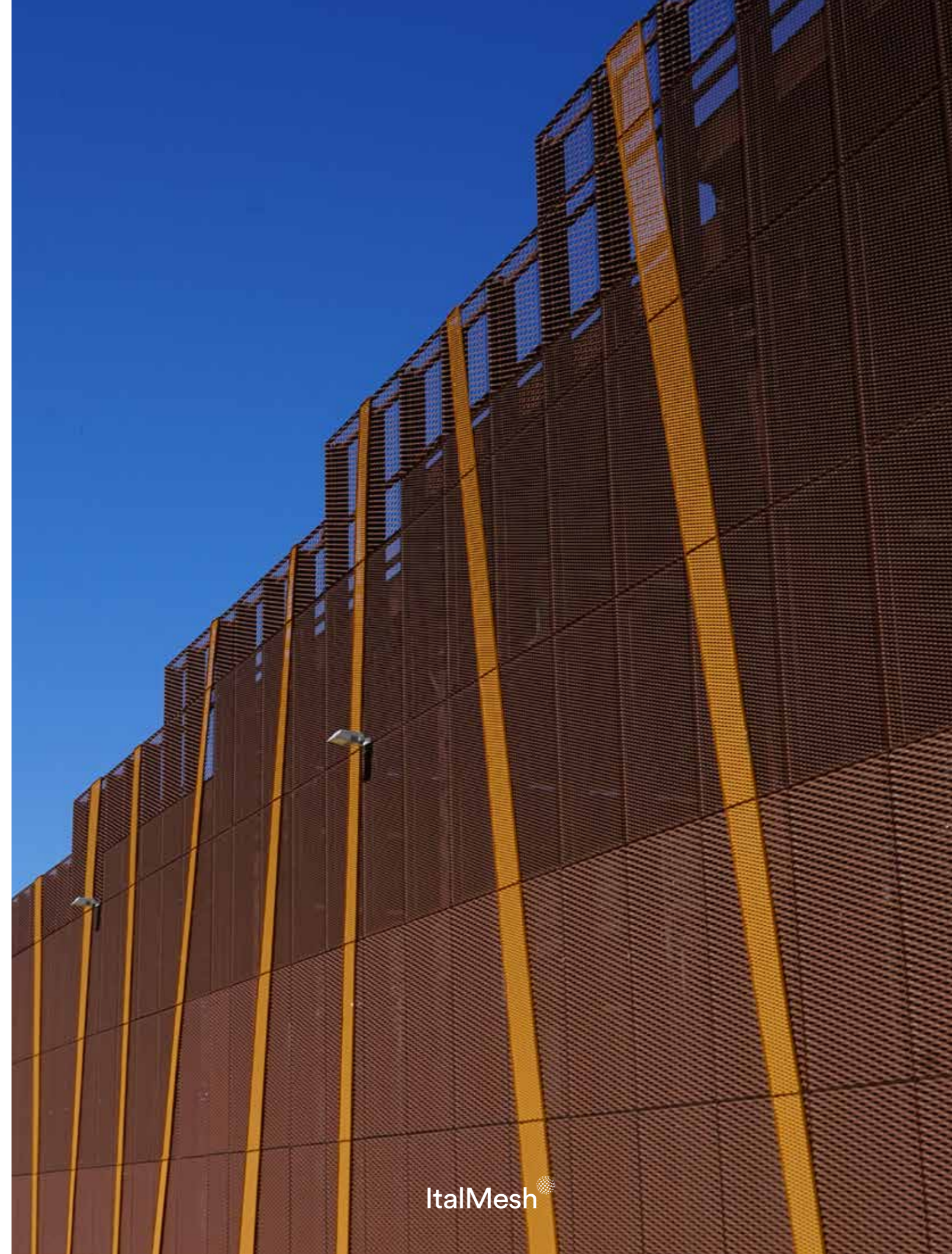
AGRICOLA MASI

Important project carried out for the winery, Agricola Masi, the famous Amarone della Valpolicella producer. The new grape processing plants were entirely clad with ItalMesh aluminum expanded metal Siena 100, 150 and 200 models painted with copper effect powder paint. The meshes installed help to ensure thermal and acoustic insulation, important benefits for the production of wine and it integrates perfectly with the surrounding hills.

LOCATION
Gargagnago di Valpolicella - Italy

TOTAL M²
900

MESH
Siena 100 / 150 / 200



PLAY RESTAURANT

ItalMesh worked on the interior design of Play Restaurant, one of the most popular restaurants and lounge bars in Dubai, located on the 36th floor of the well-known Hotel "The H Dubai". For Play Restaurant, the ItalMesh team designed and built a three-dimensional false ceiling. A result has been achieved thanks to the iron sub-structure, built ad hoc, to which the Torino 20 model expanded meshes were fixed. The structure and the meshes themselves, both produced in Italy, create the play of movement and three-dimensionality required by the client for the false ceiling of his restaurant, a visual effect that the ItalMesh design team obtained using panels of different shapes and sizes, assembled together.

LOCATION
Dubai - UAE

TOTAL M²
290

MESH
Torino 20



REEF TOWER

Residential and commercial tower in the Sport City area in Dubai. The expanded meshes used, SIENA 150 model in aluminum, in RAL 9001 color, are used to cover and protect the 3 floors of the parking lot from the sun, at the same time making it possible to recycle the air. The same panels are used for the decoration in the main entrance of the tower, giving continuity to the design of the parking lot in the Hall.

LOCATION
Dubai - UAE

TOTAL M²
2000

MESH
Siena 150





MANTOVA MODA

The Italian client has decided to renovate and adapt an outdated building to the current stylistic needs. In addition to the internal renovation, it was decided to intervene also on the external appearance, entirely covering the building with expanded mesh Siena 150 model in powder-coated aluminum with the color of the NCS chromatic scale. For the realization of the project in a short time and guaranteeing the final quality of the product, which characterizes every ItaiMesh project, the team of designers has adopted a practical and innovative system that allows simple installation, thanks to the system patented by ItaiMesh. In order to respect the dimensions of the building, the ItaiMesh team has studied and conceived a tailor-made paneling to obtain an effect of continuous linearity of the facade. Particular attention was paid to the corners, which were made in a single panel, thus ensuring maximum aesthetic performance and respecting the design requested by the client.

LOCATION
Mantova - Italy

TOTAL M²
800

MESH
Siena 150



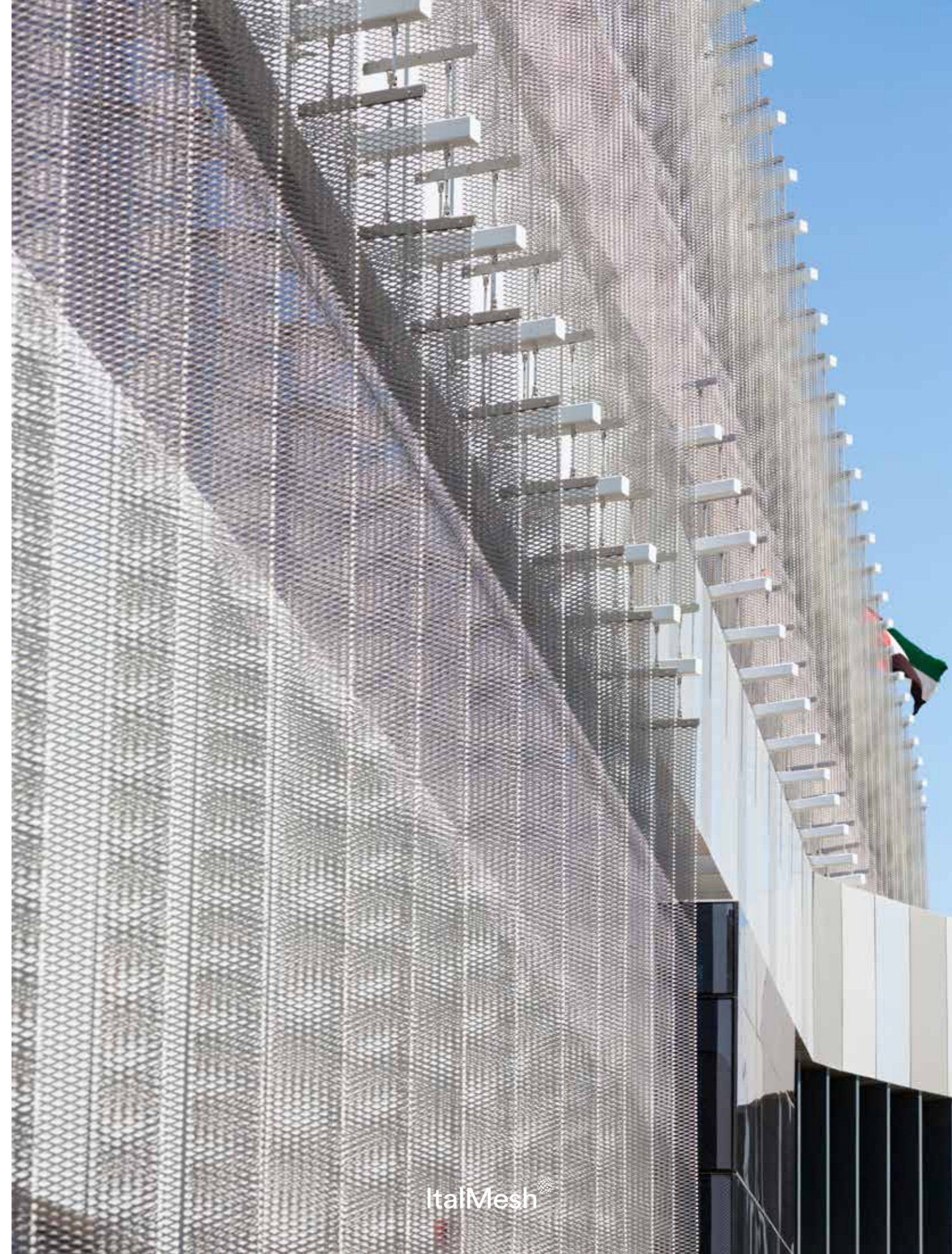
MASDAR ACCELERATOR

This is a facade made with ROMA 65 model meshes in stainless steel 316, assembled and mounted in a way to create a three-dimensional effect and at the same time create a solar shield. The assembly was carried out on site with a "sail-like" fixing system patented by ItalMesh.

LOCATION
Abu Dhabi - UAE

TOTAL M²
500

MESH
Roma 65



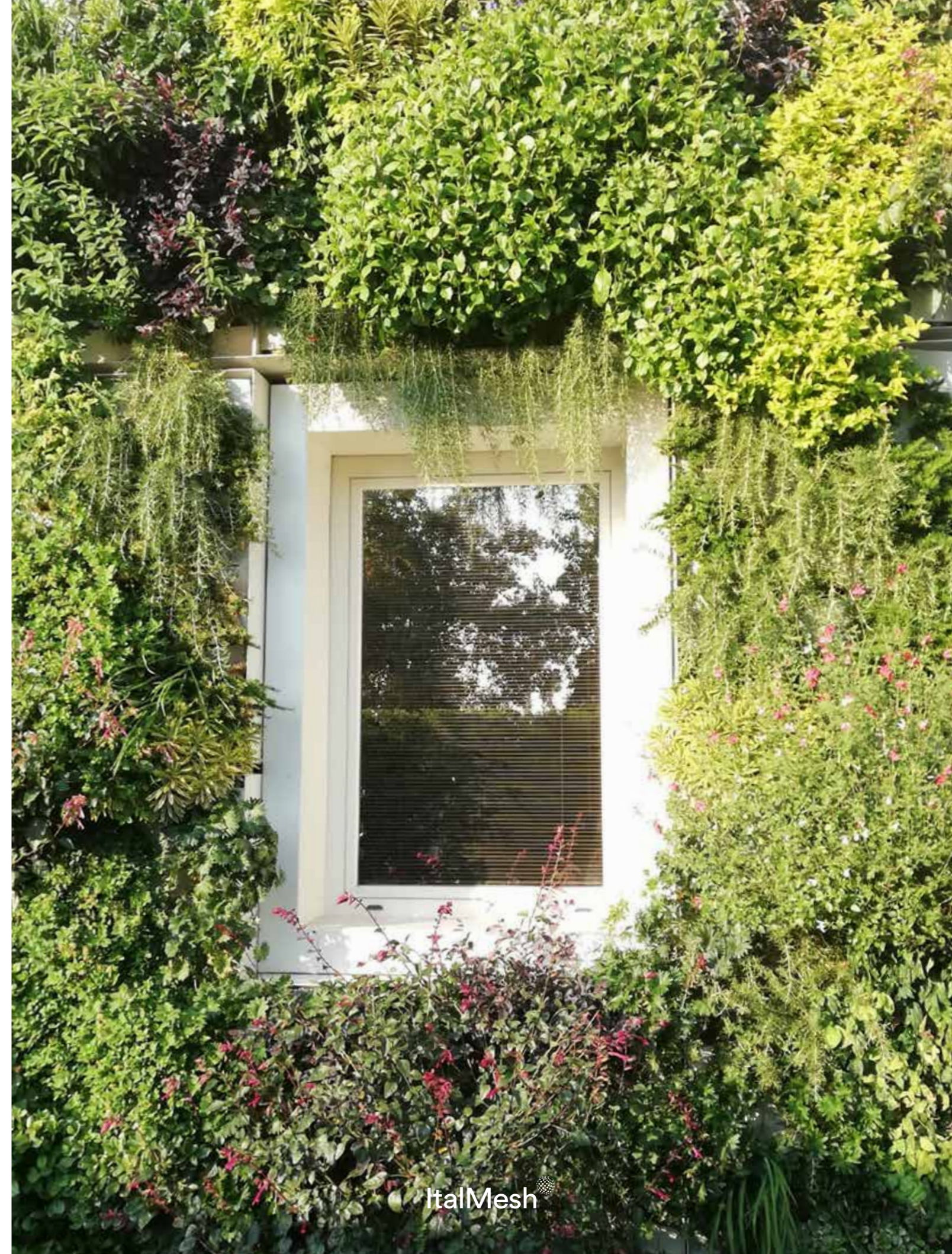
CONSUL GROUP

Respecting the Client's mission, considering sustainability as a long-term strategic approach, the ItalMesh team designed and built the facade cladding recreating a green oasis in an industrial area. The expanded mesh used is the Como 90 model, combined with the Zero Gravity Eden panels, to give an innovative and eco-sustainable touch to the building, allowing to reach high standards of thermal and acoustic insulation.

LOCATION
Brescia - Italy

TOTAL M²
200

MESH
Como 90 / Zero Gravity Eden



EMIRATES TOWERS

False ceiling with integrated lights signed by ItalMesh was used in the Etihad Towers in Abu Dhabi and in the Emirates Tower in Dubai. The architects of the "LOCI architecture + design" studio, based in Dubai, conceived this environment as essential, minimal and timeless. The ceiling, in expanded champagne-colored powder-coated aluminum mesh, has integrated LED lighting in it. This innovative solution illuminates the space in a very elegant and uniform way, eliminating the need for suspended lighting.

LOCATION
Dubai / Abu Dhabi - UAE

TOTAL M²
1000 each tower

MESH
Rimini 25





HOTEL LA SUITE

ItalMesh in collaboration with the Marco Piva studio, proceeded to create the panels used as sunshades positioned on the hotel balconies. The L-shaped panels with mesh model Roma 65 in 2 mm thick aluminum, in addition to having the function of sunshades, have been used as an aesthetic coating, which gives the structure elegance and innovation. The color chosen by the client, Gold Van Gogh, also gives a special note to this project, in fact, in addition to being a long-lasting product, the brown color, thanks to the golden flakes inside, allows the mesh panels to reflect and shine. At the light of the Sun.

LOCATION
Matera - Italy

TOTAL M²
300

MESH
Roma 65 double layer



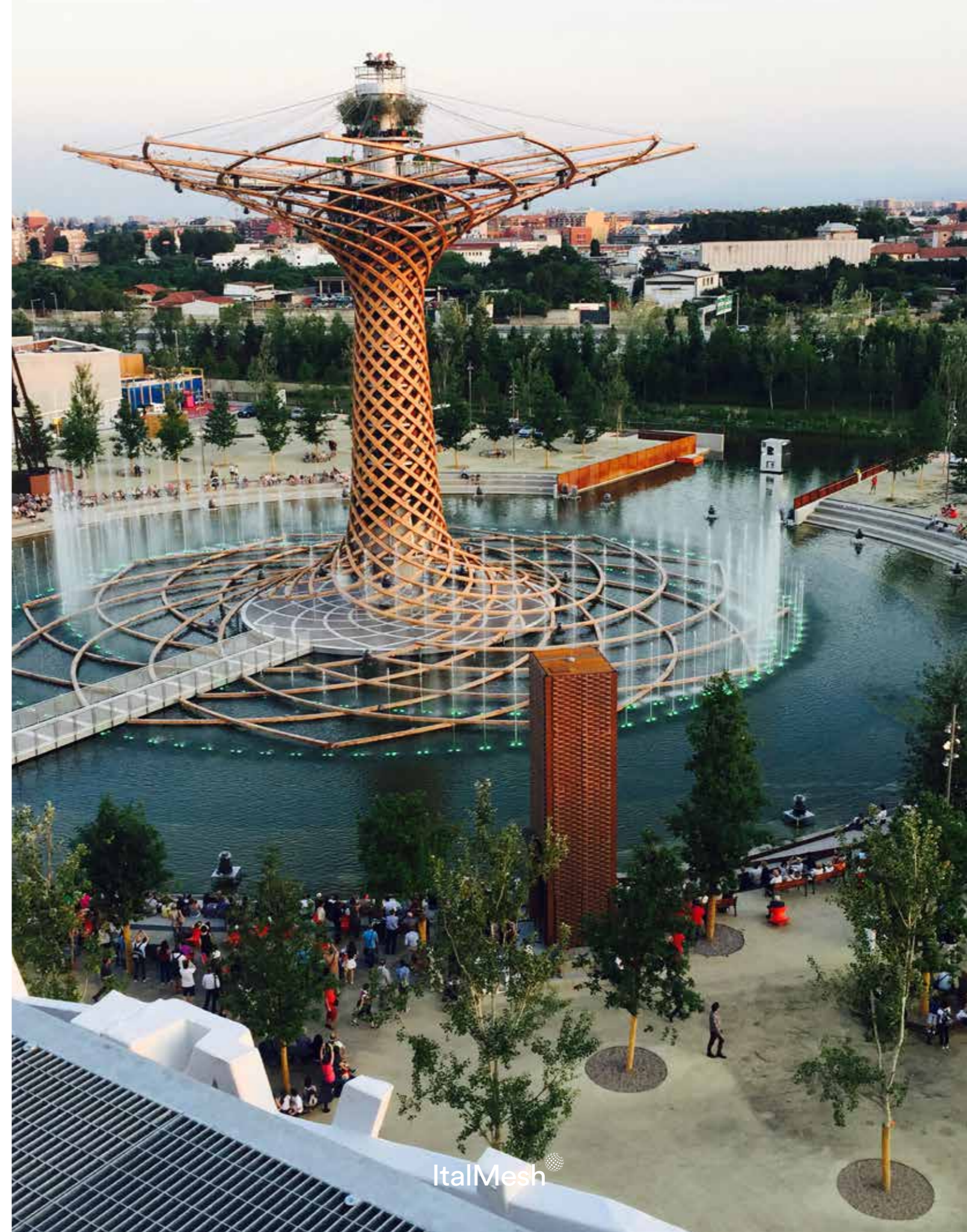
TREE OF LIFE

ItalMesh participated in the creation of the "Tree of Life" for Expo 2015. The Tree was a part of the Italian Pavilion and it was made entirely of wood and steel. The Tree of Life, 35 meters high and surrounded by a lake that was the focus of Expo 2015. Water games, lights and sounds were created around the Tree of Life. ItalMesh contributed to the realization by supplying the Vienna 400 model steel mesh, powder coated, used for the 4 audio and video towers and for a part of the trunk.

LOCATION
Milano Expo 2015 - Italy

TOTAL M²
300

MESH
Vienna 400



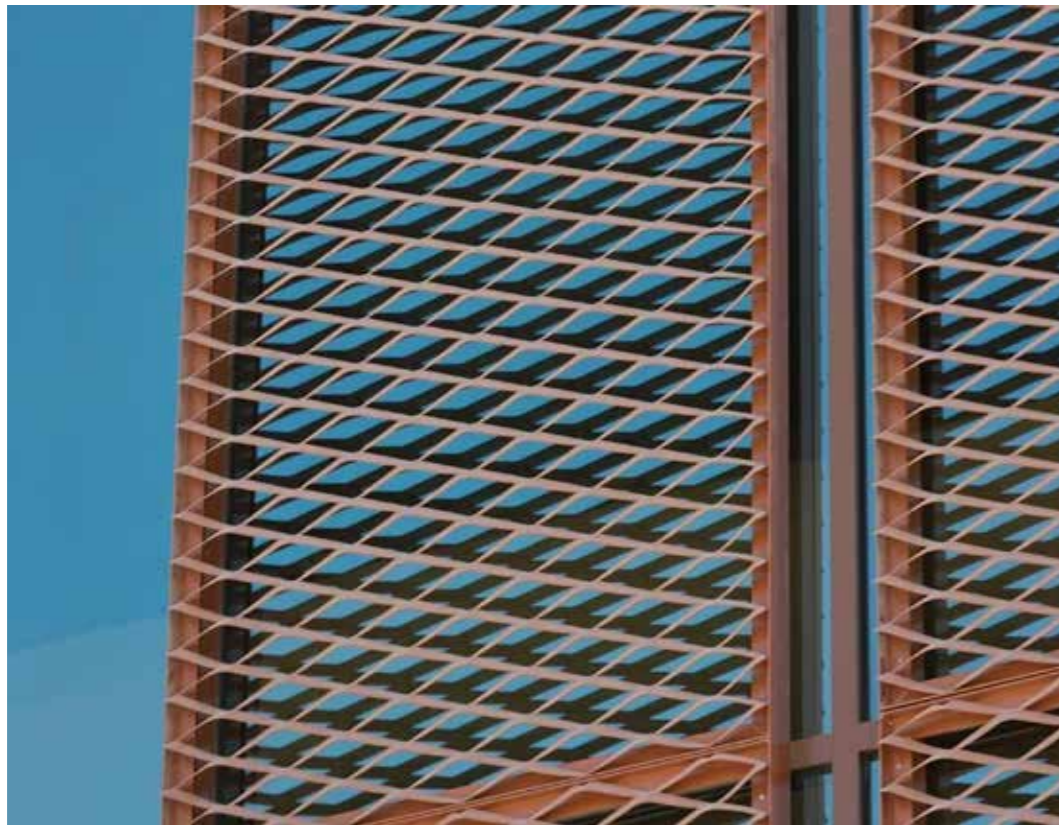
MEYDAN GRANVIEW

The project concerns the construction of sun screens in the most exposed areas of the 750 villas located in Dubai. The panels were made with Brescia 250 mesh and painted with Copper Color, made specifically for the customer.

LOCATION
Dubai - UAE

TOTAL M²
11000

MESH
Brescia 250



Concept & art direction
Hangar Design Group

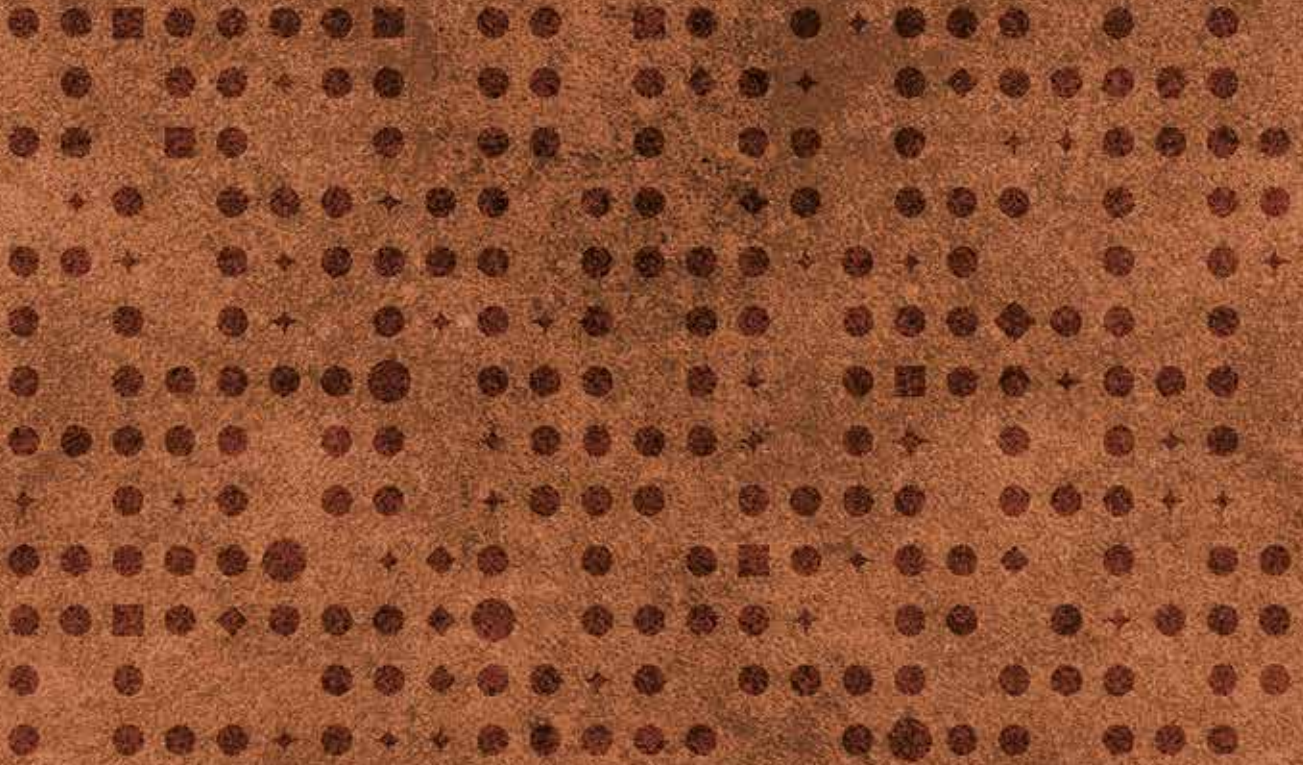


Headquarter
Via Artigianale, 65
Montirone
Brescia - Italy
Tel. +39 030 2170539

UAE Marketing Office
Jumeirah Lake Tower,
Cluster W, Tiffany Tower
Office 2206
Tel. +971 44269913

italy@italmesh.com

italmesh.com



italmesh.com

