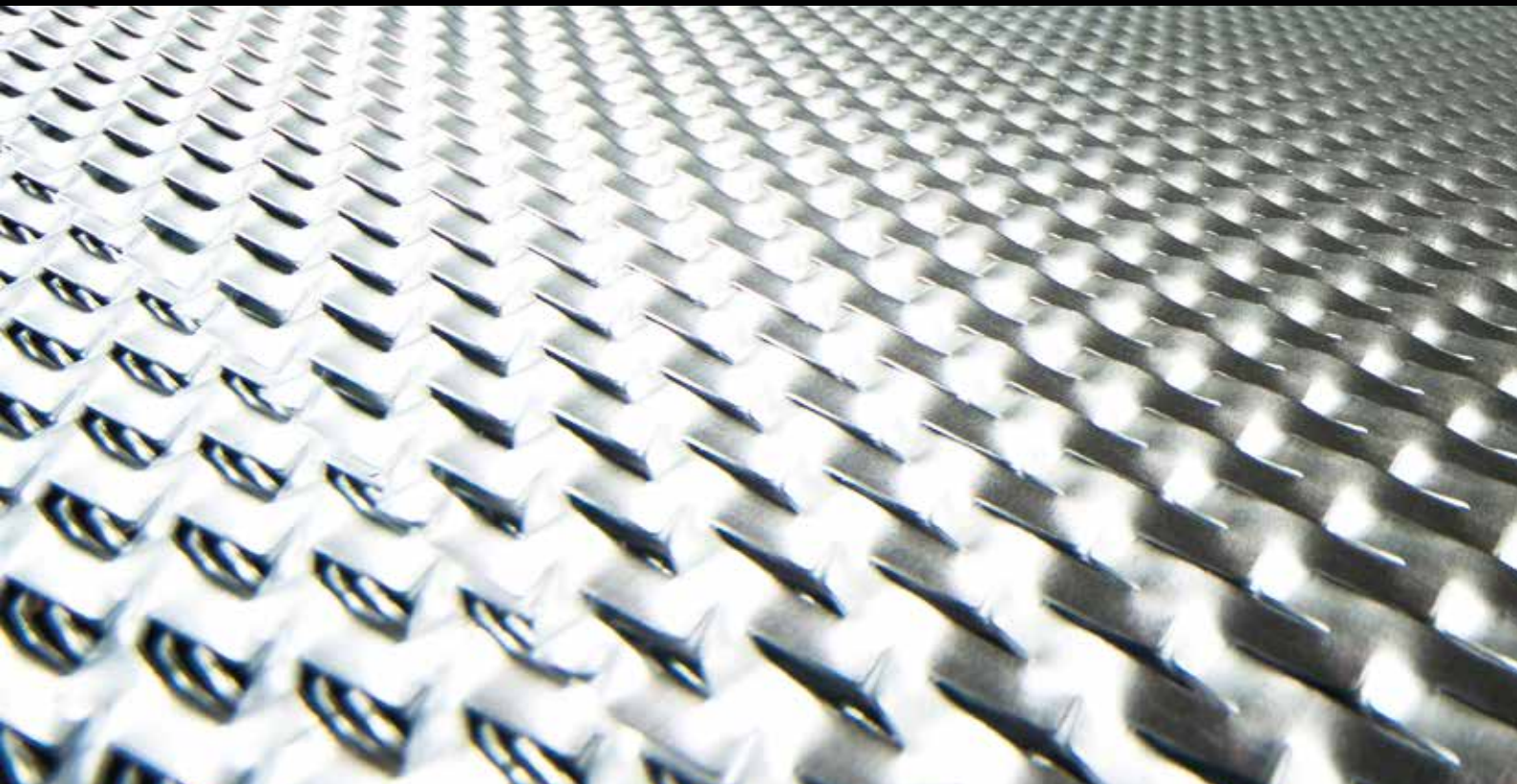




**ItaIMesh<sup>®</sup>**







# ItalMesh®

PRE-QUALIFICATION



NEW SURFACES FOR ARCHITECTURE

# Table of contents

---

COMPANY PROFILE .....	3
PRODUCTION CYCLE .....	4
Mesh production	
Powder Coating	
WAREHOUSE STOCK .....	6
PACKAGING AND SHIPPING .....	7
SUPPORT PROCESSES .....	8
FACADES .....	9
FALSE CEILING .....	26
INTERIOR DESIGN .....	28
SUNSHADES .....	30
FENCES .....	31
APPLICATION CASE STUDIES .....	32
PROJECT UNDERCONSTRUCTION .....	34
CERTIFICATION .....	36
RECENTLY COMPLETED AND ONGOING PROJECTS .....	37
DESIGN - ENGINEERING .....	38
MISSION .....	39



# Company profile

---

ItalMesh represents twenty years' experience of two groups, situated in North Italy and specialized in processing and powder coating, of steel and aluminum expanded meshes.

The company has more than 200 machines for the production of expanded meshes and double line production for powder coating.

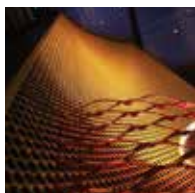
This has enabled ItalMesh to offer more than 300 types of meshes for applications in architecture, satisfying most designers' requirements. These products can be used to give an innovative effect to the interiors like separ  and furniture beside being used for false ceiling panels and slats.

They are also used to enhance multiple projects such as covering the facades, car park and sun shades.

A good knowledge at world level and the constant research of improving make ItalMesh a reliable partner and a reference point for clients who want a new custom product made such by the colors and its versatility.

Our productive process follows all the quality policies and our managing process consists in the management of documents like Quality Management System.

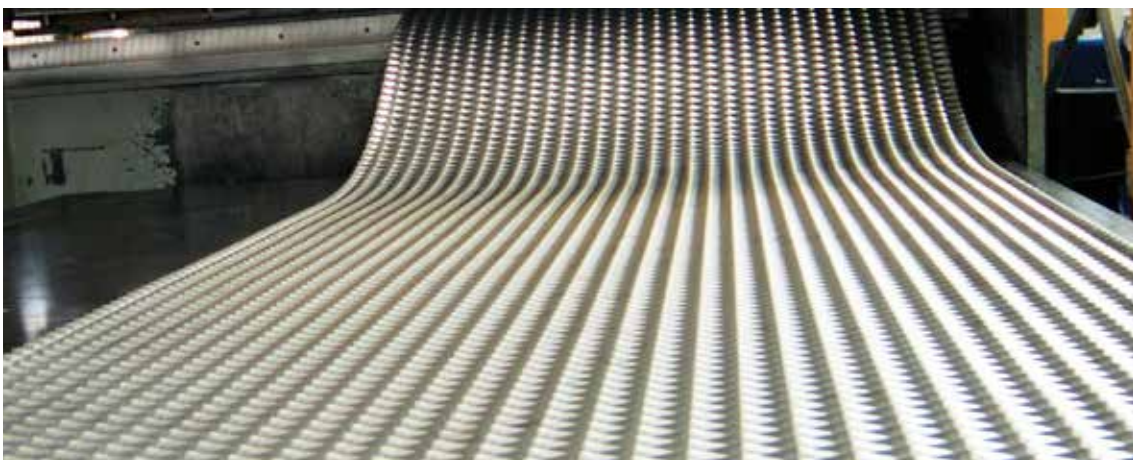
We are certified: ISO 9001: 2008 - ISO 14001: 2004  
ESMA (Dubai – United Arab Emirates)



# Production cycle

## Mesh production

- Acquisition, planning and management of orders
- Material procurement and management
- Development and control of Production process
- Full Check and Control of the production status in all the stages.
- Control of outsourcing processes, like electro brightening, anodizing and galvanizing, with self-check by the supplier and inspection of incoming material by Italmesh for acceptance
- Final Visual Control on the products



# Powder Coating

---

- Pre-treatment of Mesh and drying process
- Powder coating is carried out by automatic electrostatic
- Polymerization process in oven
- Checking the production status every hour: some samples are taken and subjected to color, brilliancy, adherence and thickness checks/test
- Final Visual Control on each piece

The color is not just a simple coating but it's made to offer special aesthetics effects making any project more valuable.

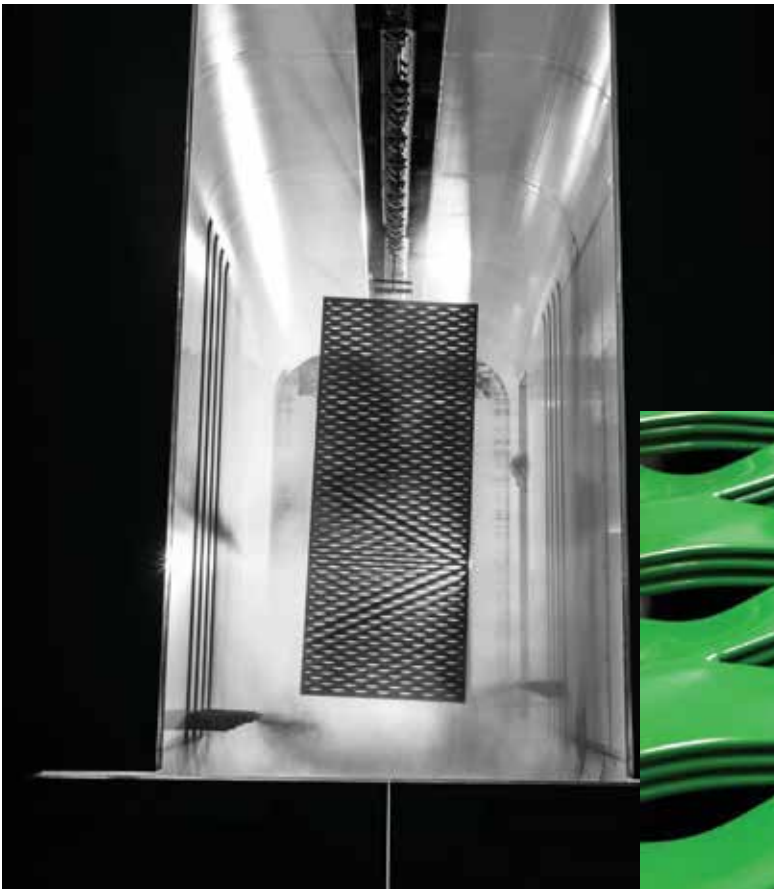
That's why besides having all the colors of the RAL, ItalMesh also offers customized and unique colors with innovative effects.

Qualicoat 3, the long lasting paint is used to guarantee maximum resistance and quality outside.

All the powder coatings which are applied, are non-toxic.

Customers can choose among the wide range of colors for indoors and outdoors.

The finishing offer by Italmesh are matt, semi-gloss, gloss, wrinkle or textured finish.



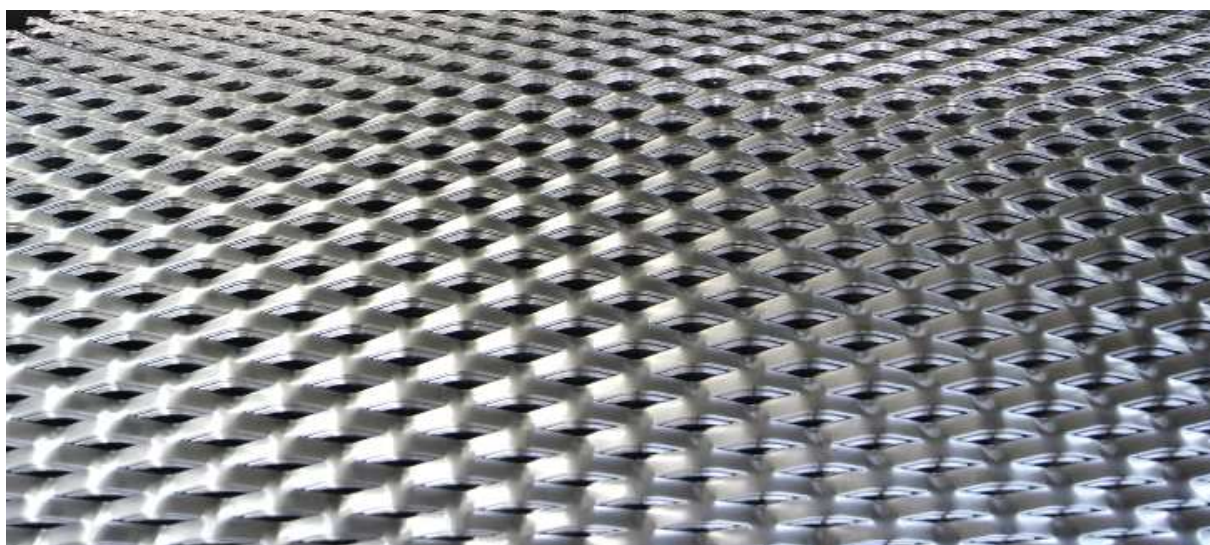
# Warehouse stock

We have a vast stock of meshes in standard sizes.

Max width 1000, 1250, 1500 mm and the best length within 3000 mm.

The thickness of the material goes from 0,8 to 3 mm for all types of steel, weathering steel, aluminum, stainless steel and copper products.

Our productivity is about 4000 sqm per week and our production time is 4/6 weeks from the issuing date of the order.





# Packaging and shipping

---

A wide warehouse allow us to operate easily with the assembly and packaging as per clients' needs. Thanks to our reliable partners, specialized in carrying the goods, we can export both by sea or air.

We provide all the documents to our clients for the shipment.



# Support processes

## SUPPORT PROCESSES:

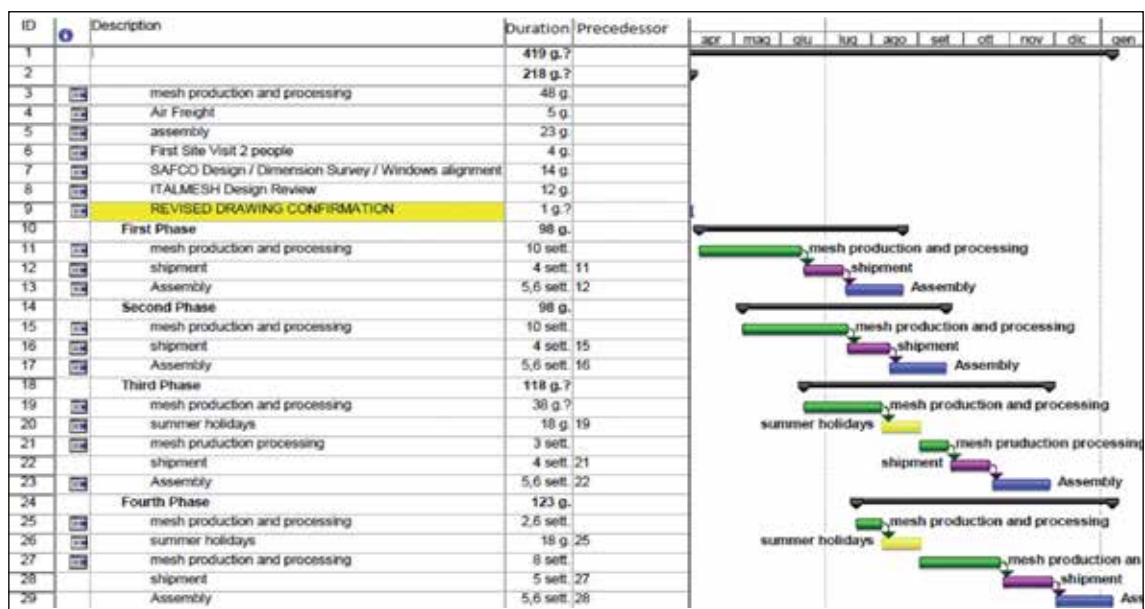
- Human resource management
- Production equipment and infrastructure management
- Full Packaging, shipping and delivery to the customer's site
- Use of Customer Relationship Management (CRM)
- Supplier assessment
- Management of measuring and control devices
- Customer satisfaction
- Audits
- Data analysis and continuous improvement

The whole design is carried out according to:

- Best logistics solutions;
- the most suitable criteria for the various production stages;
- stages of installation of work in progress on the site.

Assembly is also designed in order to make the installation easy and simple as possible.

8



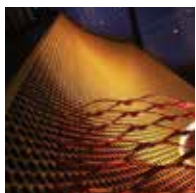
# Facades



9



GIARDANGO Location: MILANO



# Facades



10



YAS MALL CAR PARK / Location: ABU DHABI



# Facades

---



11

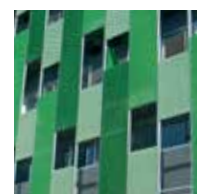
YAS MALL CAR PARK / Location: ABU DHABI



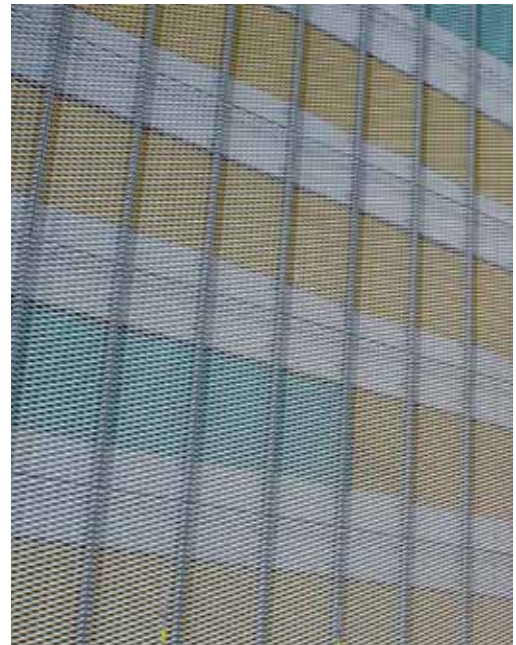
# Facades



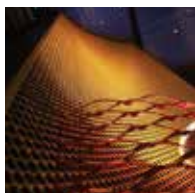
12



# Facades



CENTRAL BANK OF LAGOS / Location: NIGERIA



# Facades



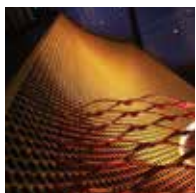
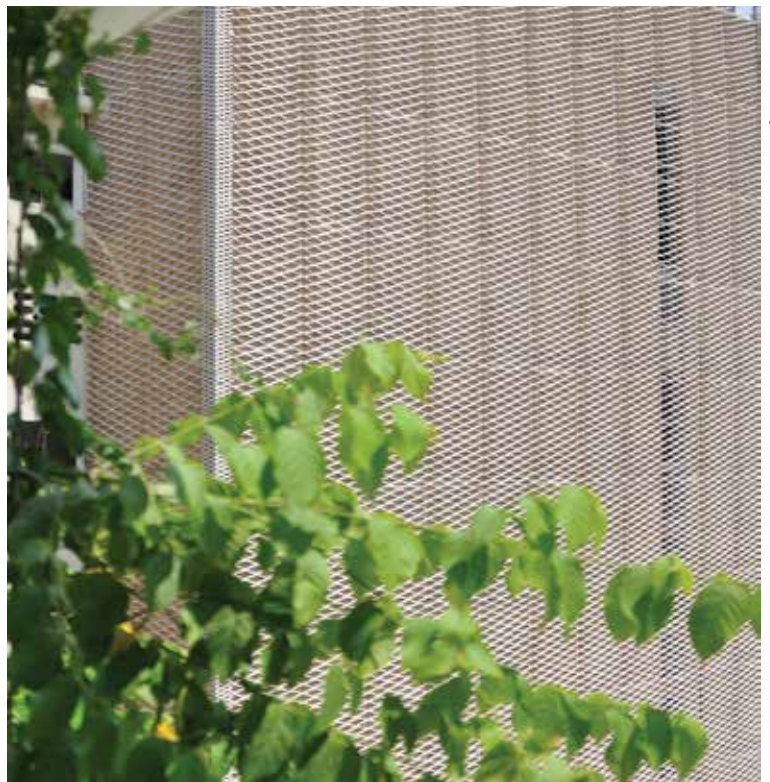
PEARL MARZOUQ/ Location: KUWAIT CITY





# Facades

---



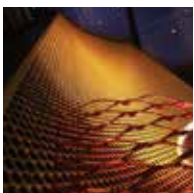
# Facades



TECHNO HUB / Location: DUBAI SILICON OASIS



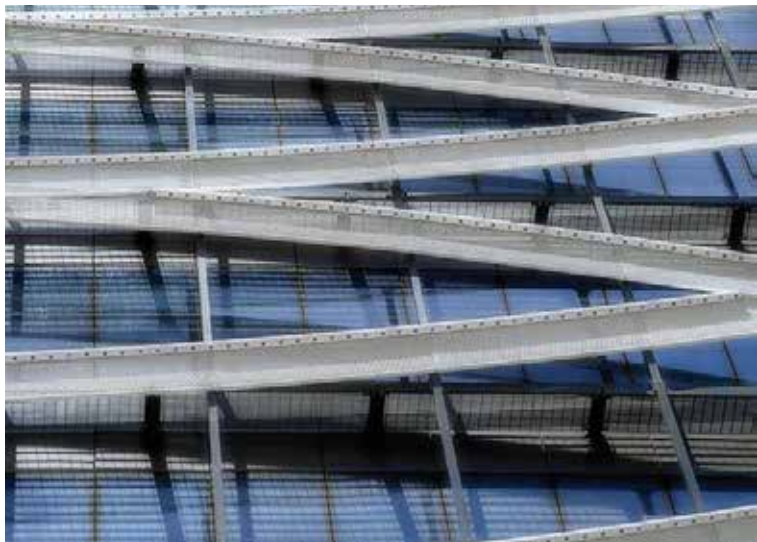
# Facades



# Facades



18



TOURISM BANK HEADQUARTER BUILDING / Location: TEHERAN - IRAN



# Facades



19



ATLAS MALL / Location: MASHHAD  
IRAN

# Facades



20



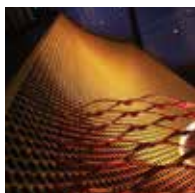
# Facades



21



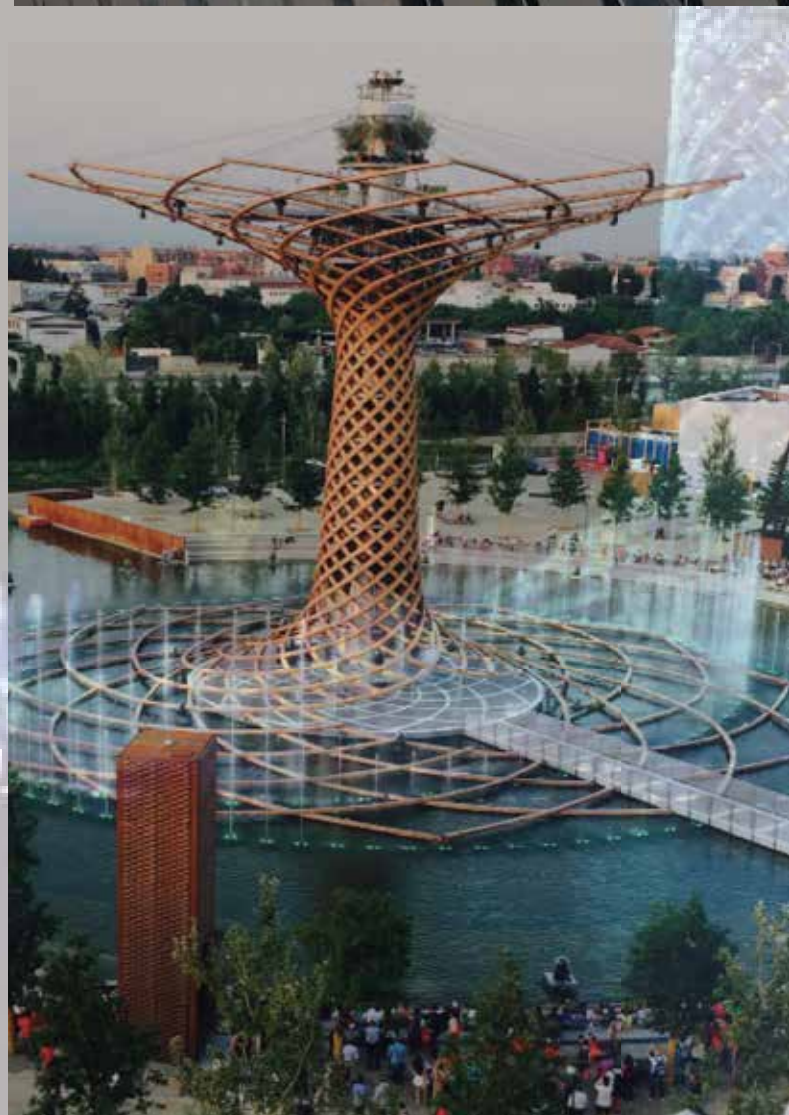
MANTOVAMODA / Location: MANTOVA  
ITALIA



# EXPO 2015 - MILANO

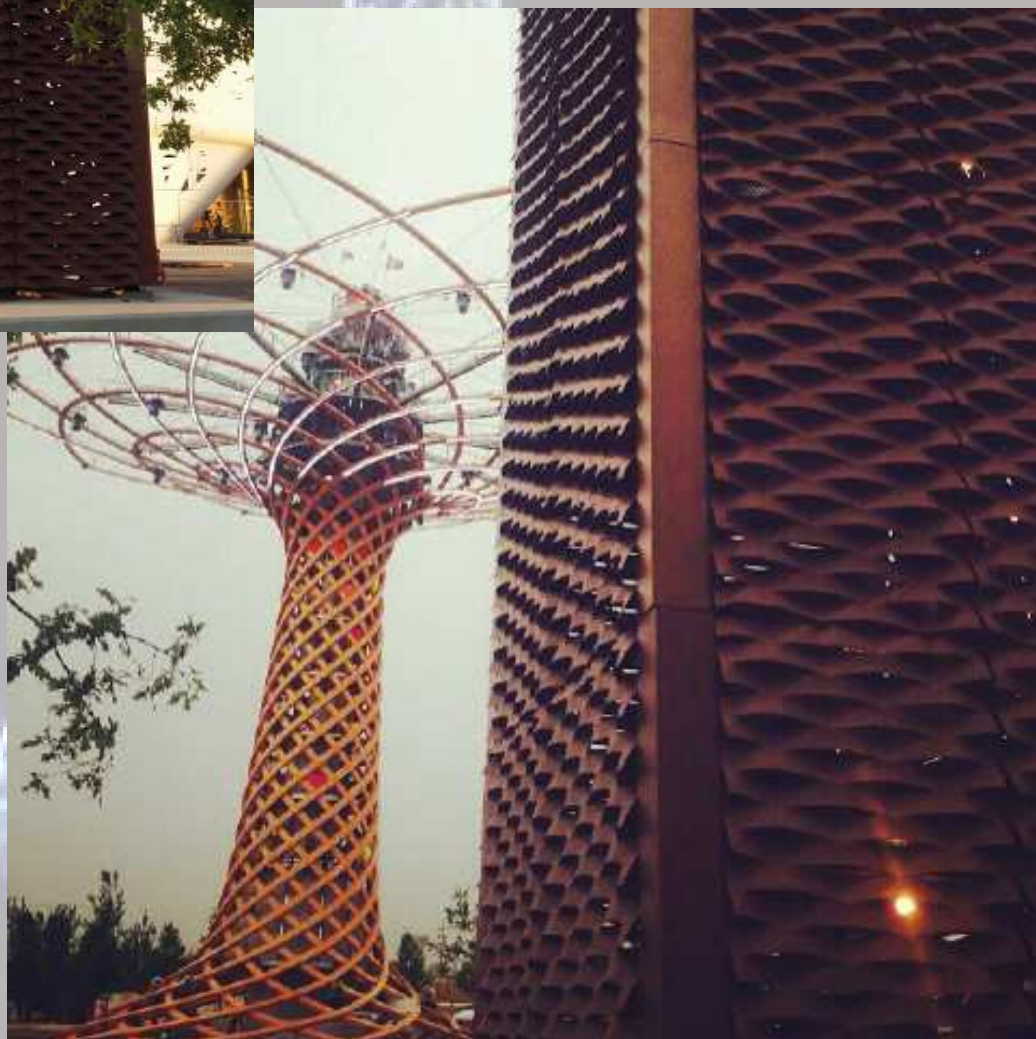
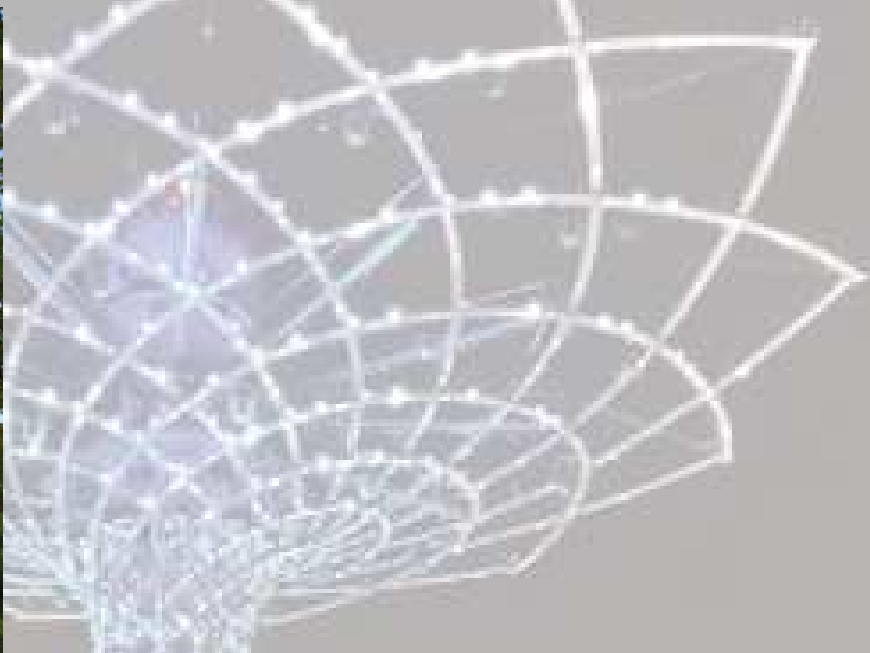


22





# EXPO 2015 - MILANO



23

Parking / Location: Brescia, Italy



# Facades



24



KES SCHOOL / Location: KUWAIT CITY



# Facades

---

BEFORE



AFTER



# False ceiling



26

PEARL MARZOUQ/ Location: KUWAIT CITY



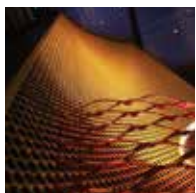
FALSE CEILING/ Location: DUBAI



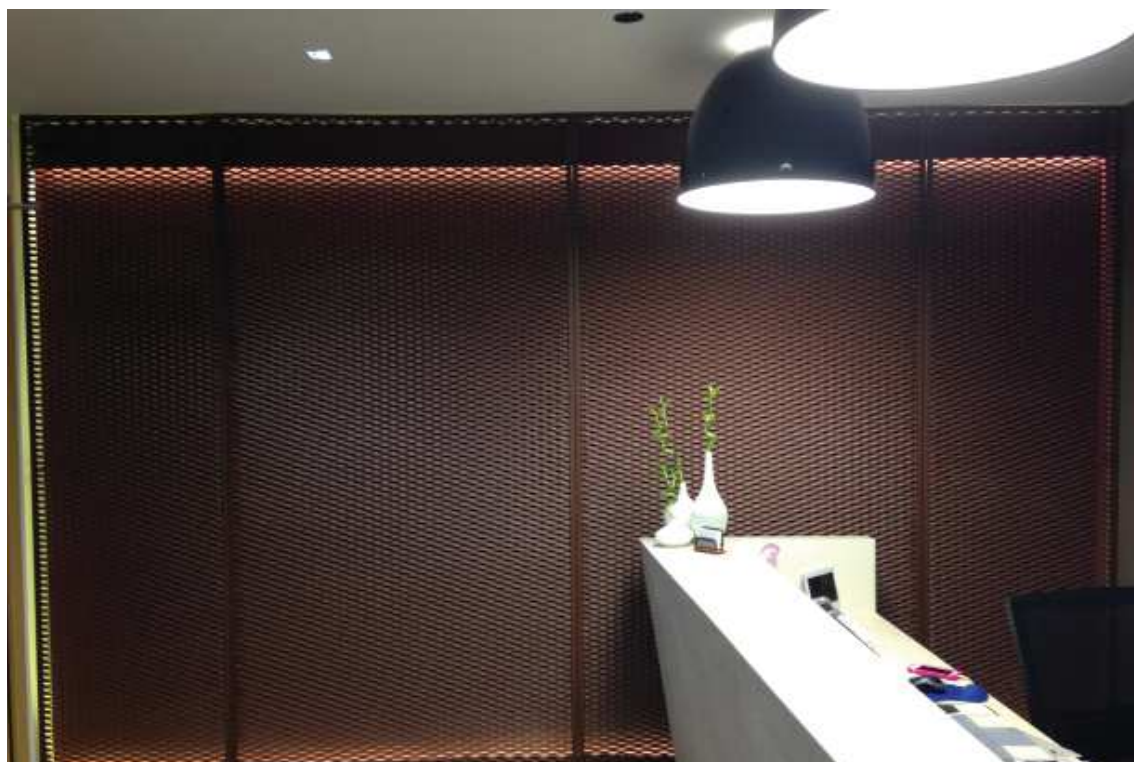
# False ceiling



PLAY DUBAI / Location: DUBAI



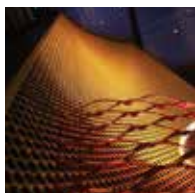
# Interior design



28



# Interior design



# Sunshades



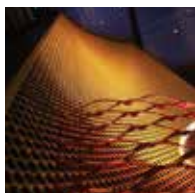


# Fences

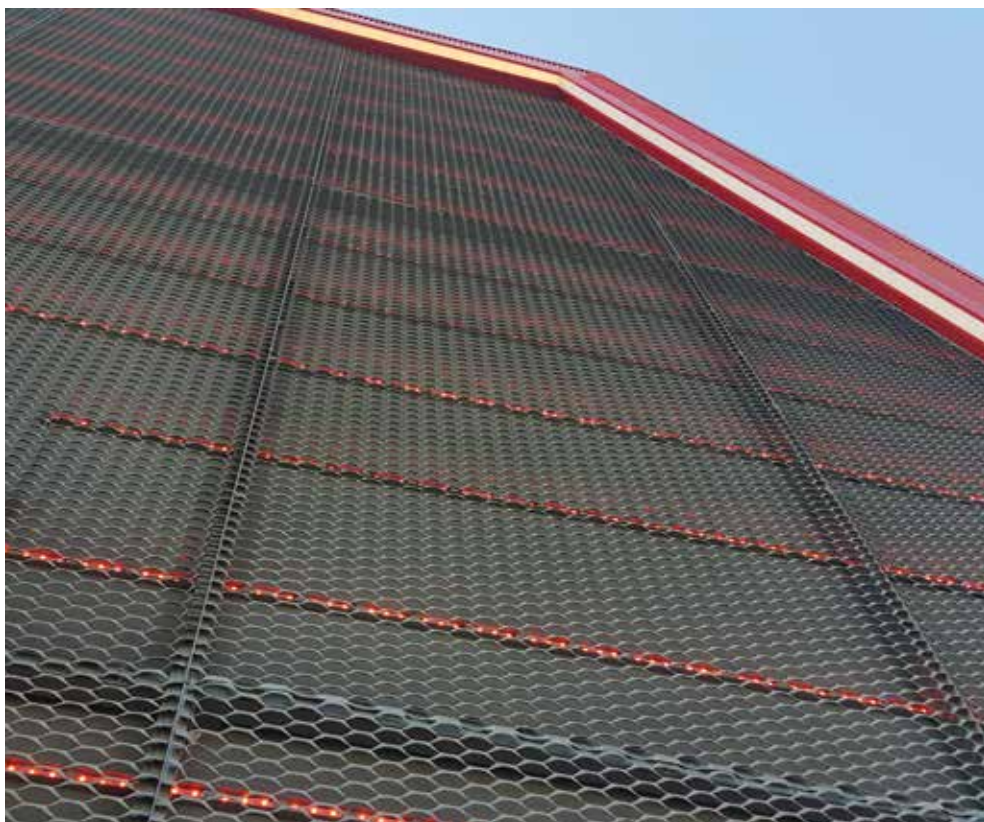
---



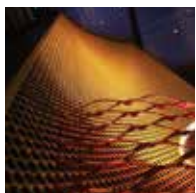
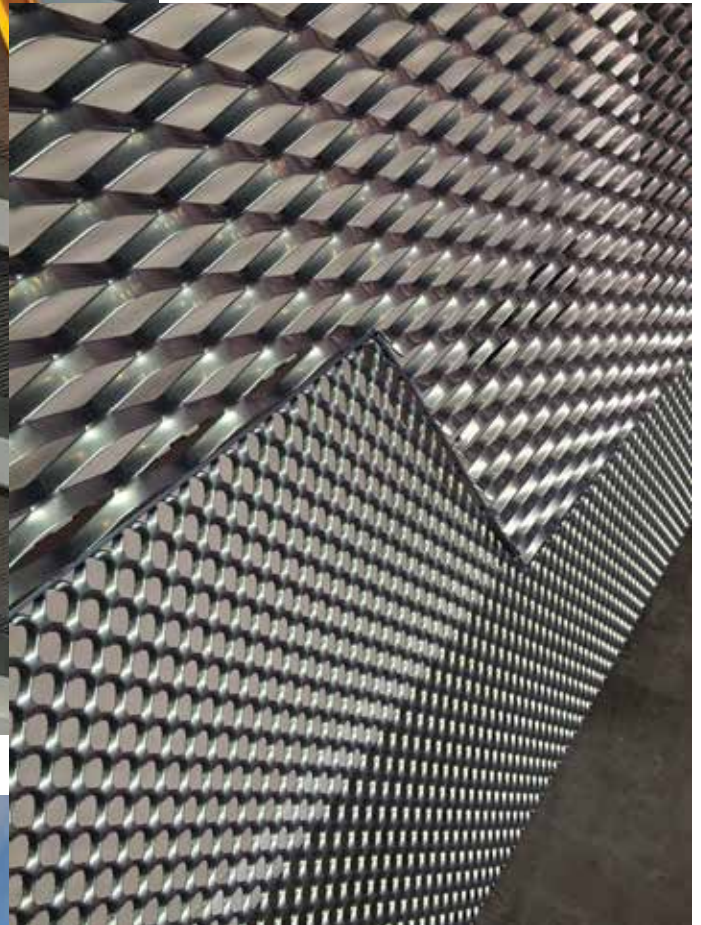
31



# Application case studies



# Application case studies



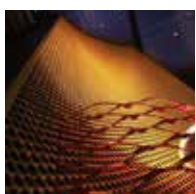
# Project under construction



34



# Project under construction



# Certification

We strictly follow international rules and regulations of quality and security.

Our policy is always in line with the requirements of local and International certifications following the required legislation in order to secure that all the works are done under complete security and without any risk to the health of our employees on the work site .

We continuously work to improve and update our quality standards to satisfy the needs of international quality through the advance production techniques.

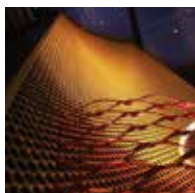
All our projects follow the parameters set for the quality, from the development of the project to the final delivery.

We are certified: ISO 9001:2008 / ISO 14001:2004 / ESMA / QUALICOAT



# Recently Completed and Ongoing Projects

Project Name –Client	Location	Country
Yas Mall Car Park	Yas Island	U.A.E.
Pearl Al-Marzouq Palace	Kuwait City	Kuwait
Rolex Tower	Dubai	U.A.E.
Roberto's Restaurant	Dubai DIFC	U.A.E.
National Bank Of Lagos	Lagos	Nigeria
Substation Yas Island	Yas Island	U.A.E.
Autogrill Villoresi Nord	Milan	Italy
Chief Bukazi Etete	Lagos	Nigeria
Bowling Alley	Manama	Baharain
Youth Club	Montirone	Italy
Medical SPA	Brescia	Italy
Health Center		Italy
Canoopty Sofitel	Dubai	U.A.E.
Sirmione Patition	Sirmione	Italy
Linus Pizza	Rezzato	Italy
Linus Pizza	Desenzano del Garda	Italy
Minervium Studio	Manerbio	Italy
Al-Ain SZDLC	Al Ain	U.A.E.
Al Fahim Office	Dubai	U.A.E.
Partion Sliding	Abu Dhabi	U.A.E.
Eurocom Showroom	Dubai	U.A.E.
Union Design	Lagos	Nigeria
Silvani Pizza	Brescia	Italy
Aabar Headquarter Office	Dubai	U.A.E.
Giardango	Carimate	Italy
IPIC	Abu Dhabi	U.A.E.
Union Heights		India
East Gate "Ring"	Milan	Italy
Bridge of Mitrovica	Mitrovica	Kosovo
Equipment Disco	Bergamo	Italy
Equipment Exhibition	Milan	Italy
Housing	Koelliken	Swiss
Performing Arts Center	Folkestone	UK
Railway overpass	Pordenone	Italy
Bridge of the "Alpini"	Belluno	Italy
Illy Gallery	Trieste	Italy
Knoll International	Milan	Italy
Multiplex Cinema "Porta Nova"	Crema	Italy
Suisse Wankdorf Stadium	Berna	Swiss
Old Town Hall Square	Prague	Czech Republic
Housing	Trieste	Italy
Wohnubergbauung Rotseepark	Lucerne	Swiss
Paris Motor Show	Paris	France
Stadium Lasersarre	Bilbao	Spain
Mall Berceo	Logrono	Spain
Subway	Madrid	Spain



# Design - Engineering

---

ItalMesh in addition to the study of the design and delivery of the products, provides to the customers the detail study on the practicability of the project. In fact, ItalMesh has a team of architects / engineers who can help and support the designers to make their ideas practicable, proposing the appropriate size of the sub-structure, the study of wind loads, the modularity of the panels, the right thickness of the material and finish based on where the project will be realized.

- Projects ex novo
- Design of architectural and aesthetic solutions
- Development of Customers' designs,
- Implementation of customers' requests
- Re-engineering of existing projects
- Realization of mock-up





# Mission

---

The team Italmesh studies deeply the project, trying to find the right combination between aesthetics, practicability and innovation, besides providing a complete service to every customer as it deals with the creation of the project. It offers the most suitable material and the right finish, considering every detail.

With the wide range of offered models and materials Italmesh is able to satisfy each and every budget demand.

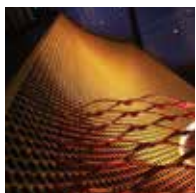
Our company is working on different markets and it is directed to the future. In fact, it is constantly looking for new materials and installation systems to make the product more versatile and easy to apply.

All our materials are certified according to the European and Middle East rules and standards. They are entirely Made in Italy and 100% recyclable. Italmesh is a 'company that offers a comprehensive service designed to meet each customer's request.

We have made many measures for both new construction and existing buildings with the intention of making modern and innovative the old, industrial and conventional structures.

Our technical team offer supervision and possible installation of the project as to ensure a complete service.

The experience gained in recent years all over the world has enabled us to work closely with design firms that have allowed us to find always new and interesting solutions for our customers.





  
**ItalMesh**<sup>®</sup>

